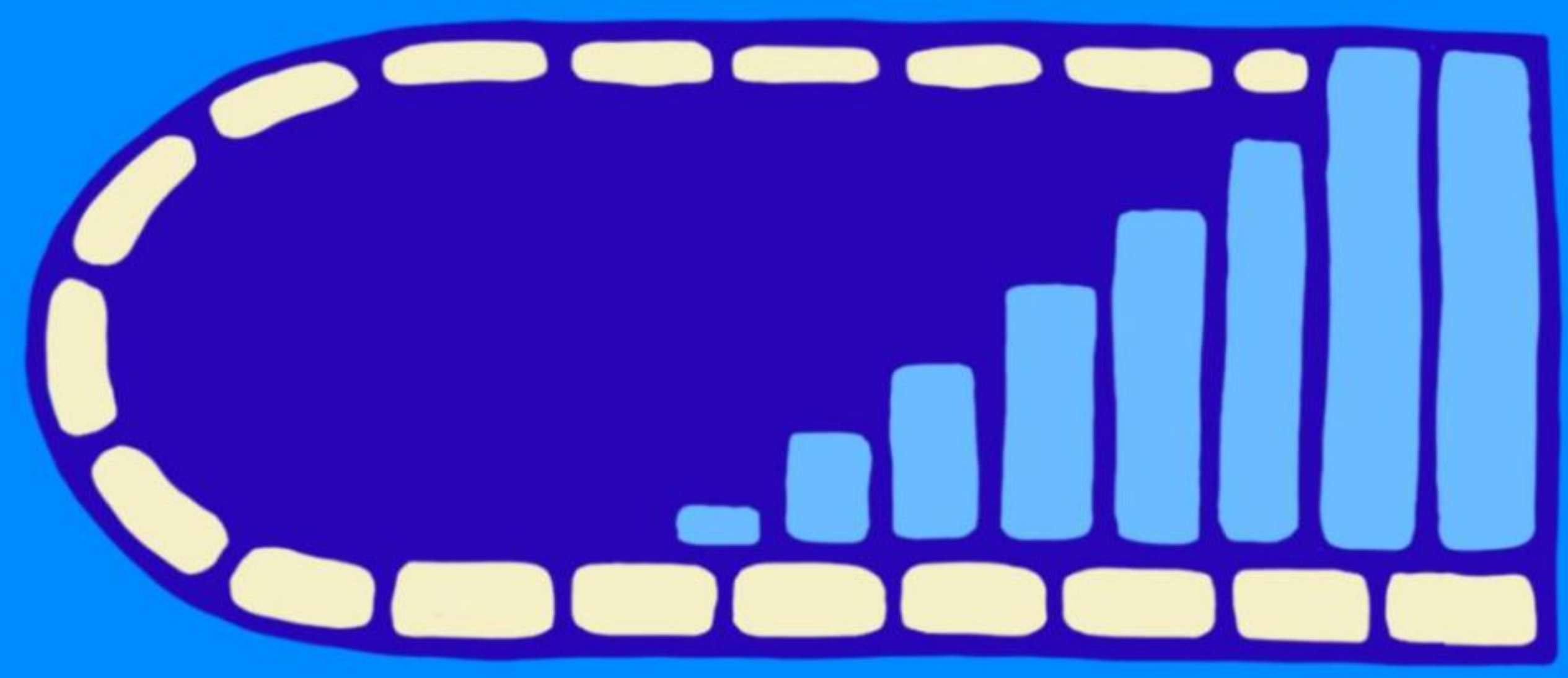
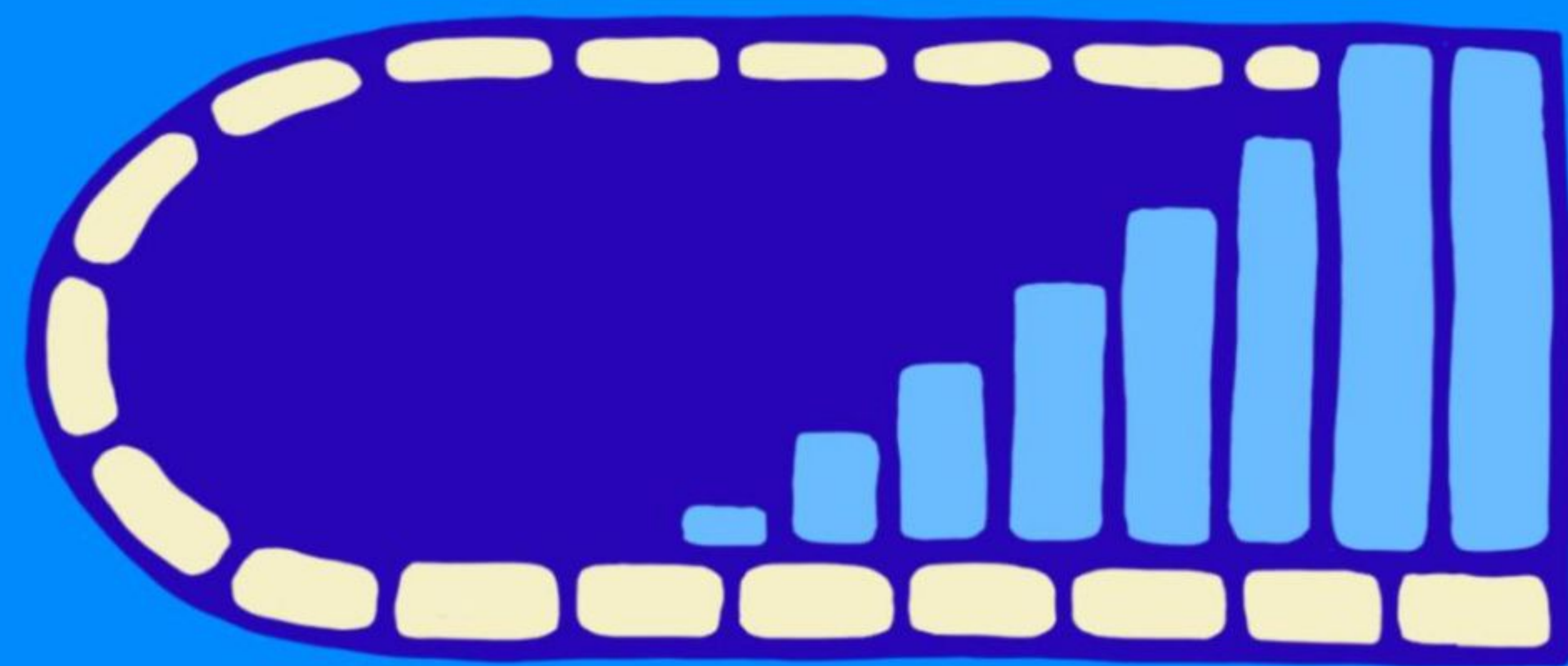


BE MADE



NEW

BE MADE



NEW

Ephesians 4:22 – 28

page 1779

Ephesians 4:22 – 24

You were taught, in regard to your former way of life, to put off your old self, which is being corrupted by its deceitful desires, and to be made new in the attitude of your minds; and to put on the new self, created to be like God in true righteousness and holiness.



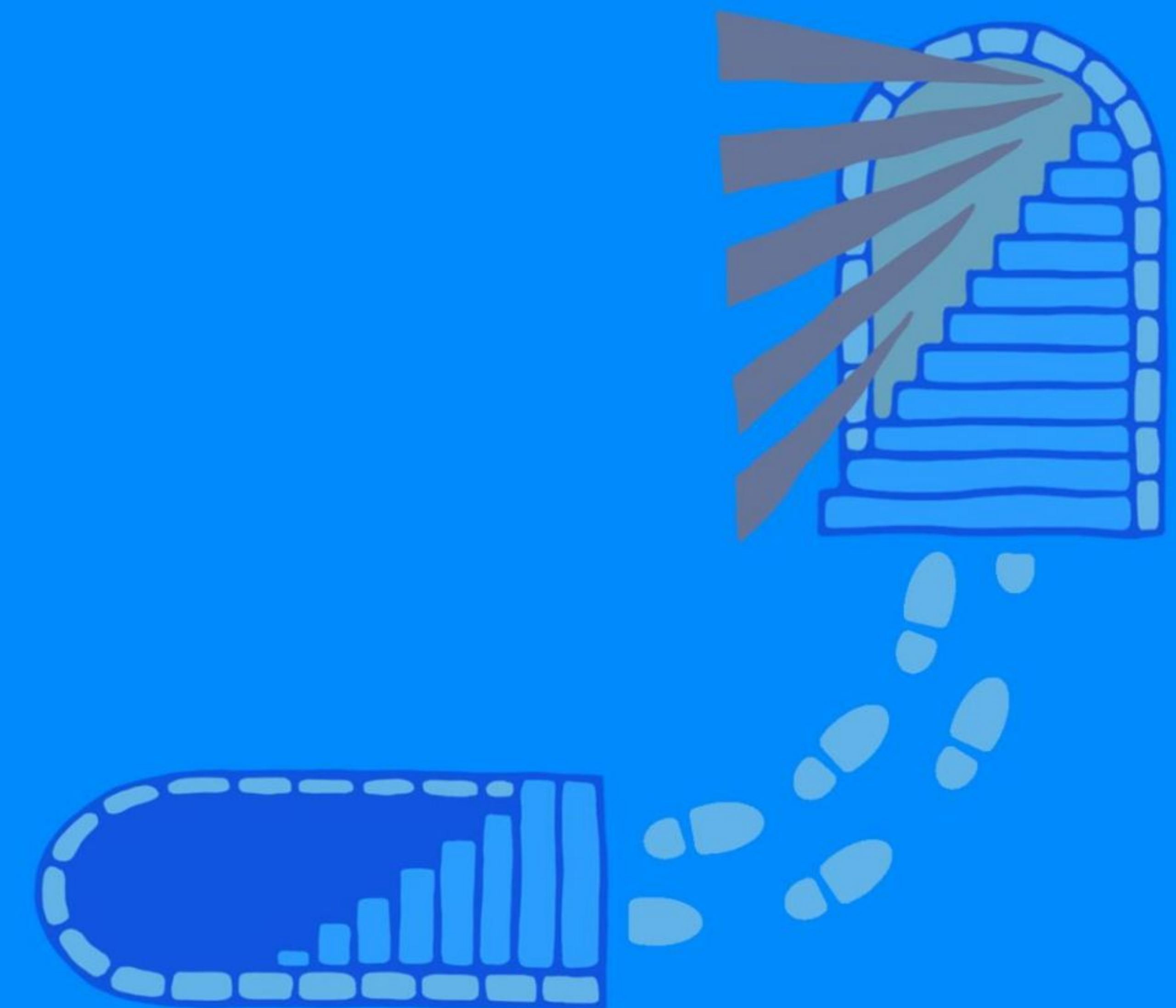
Ephesians 4:25 – 27

Therefore each of you must put off falsehood and speak truthfully to your neighbor, for we are all members of one body. In your anger do not sin. Do not let the sun go down while you are still angry, and do not give the devil a foothold.



Ephesians 4:28

Anyone who has been stealing must steal no longer, but must work, doing something useful with their own hands, that they may have something to share with those in need.





A black and white promotional photograph of the main cast of the TV show 'Suits'. There are six people standing in a row against a background of a city skyline at night. From left to right: a blonde woman in a dark dress, a man in a suit and tie, a woman in a dark dress, a man in a suit and tie, a woman in a dark blazer and skirt, and a man in a suit and tie. They are all looking towards the camera with serious expressions.

SUITS

THE FINAL SEASON

USA

Fallen Managing Partners



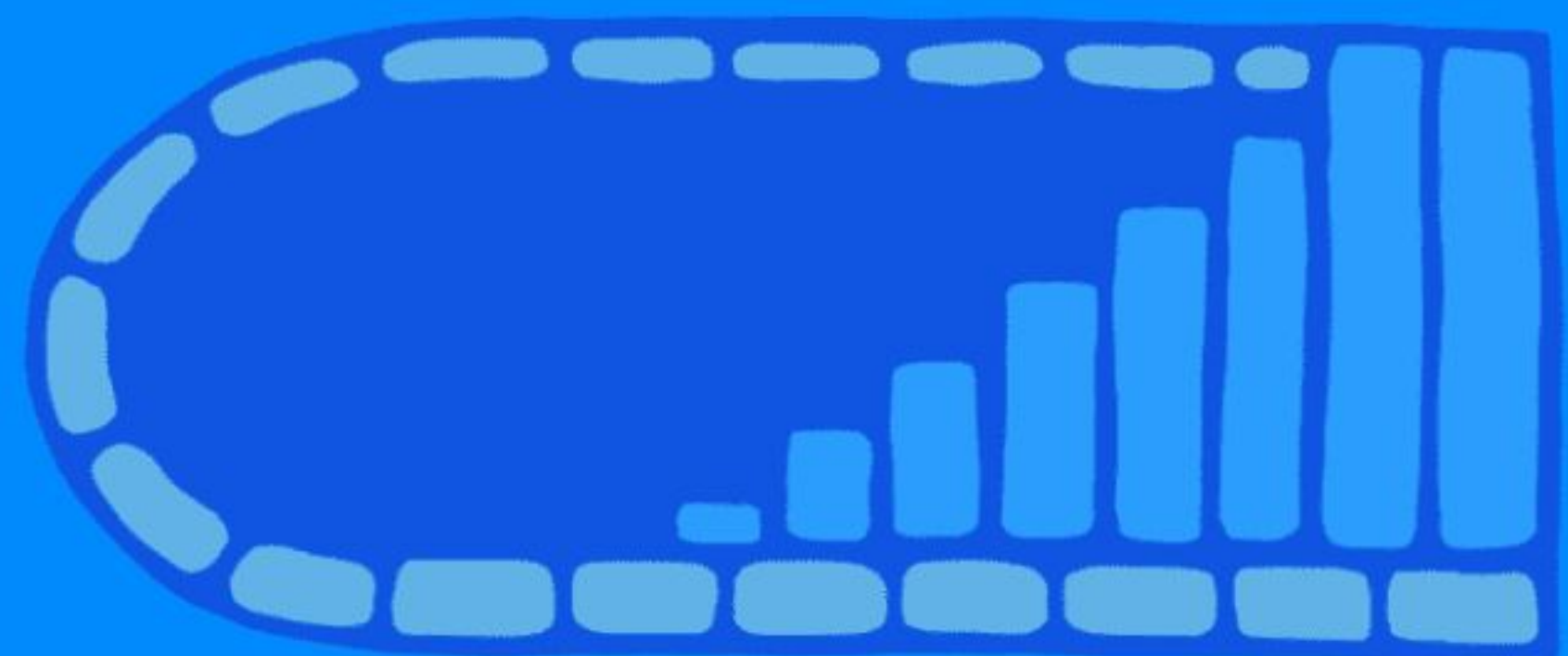
Jessica Pearson



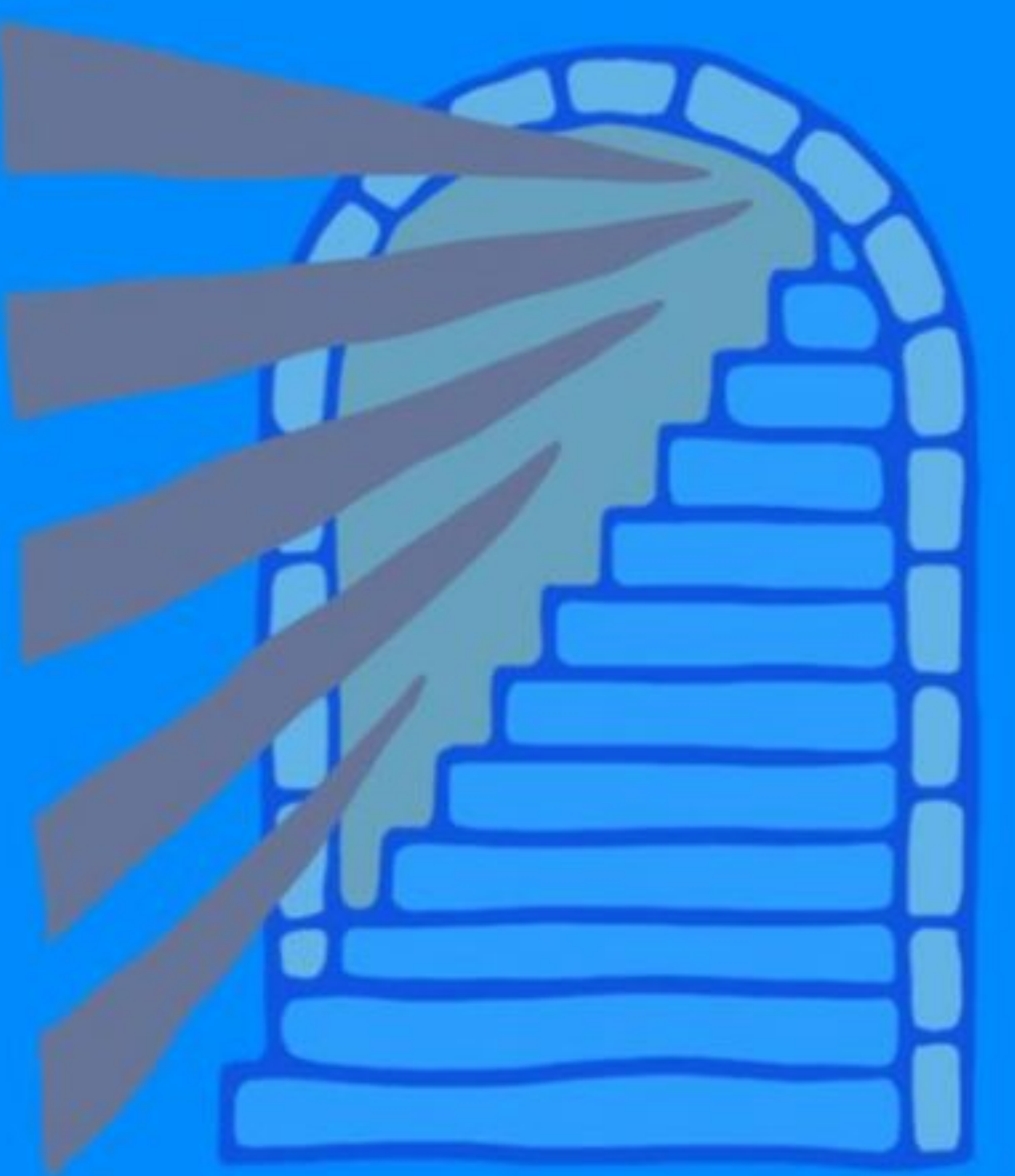
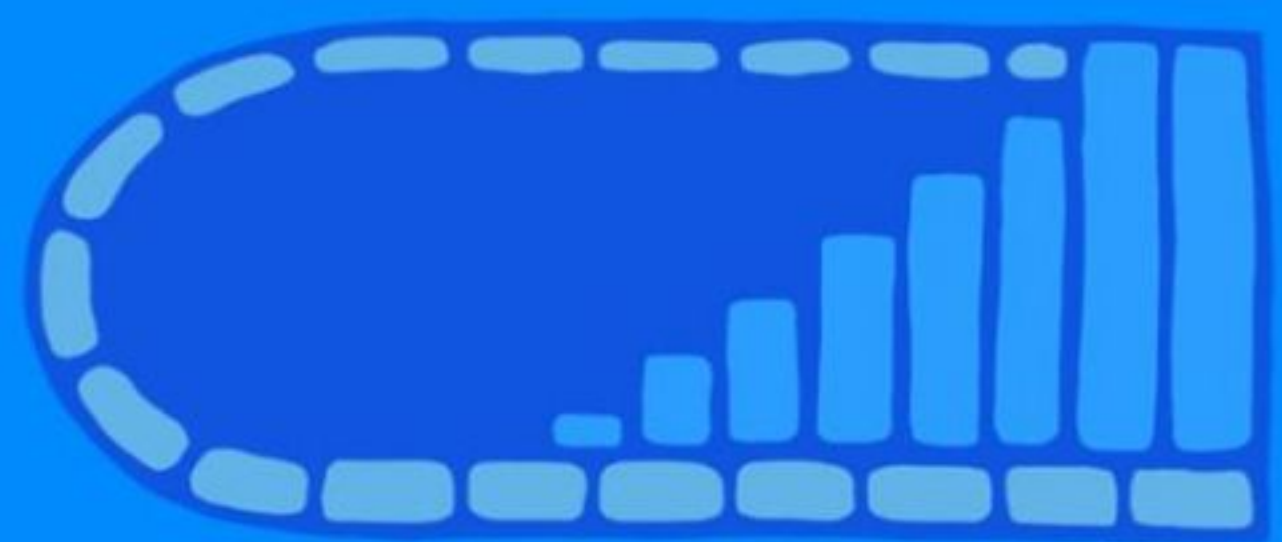
Robert Zane



Louis Litt



Unity requires graceful
truth-telling, emotional
temperance, and
individual industry.



Mind

1. Don't lie
2. Tell the truth

The Body of Christ

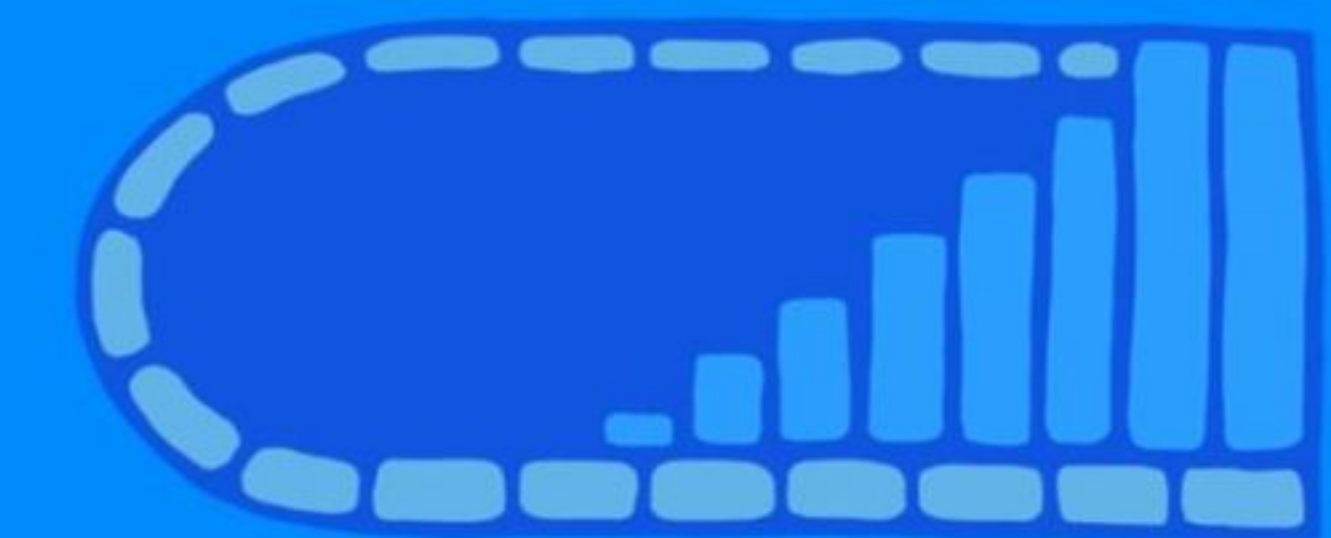
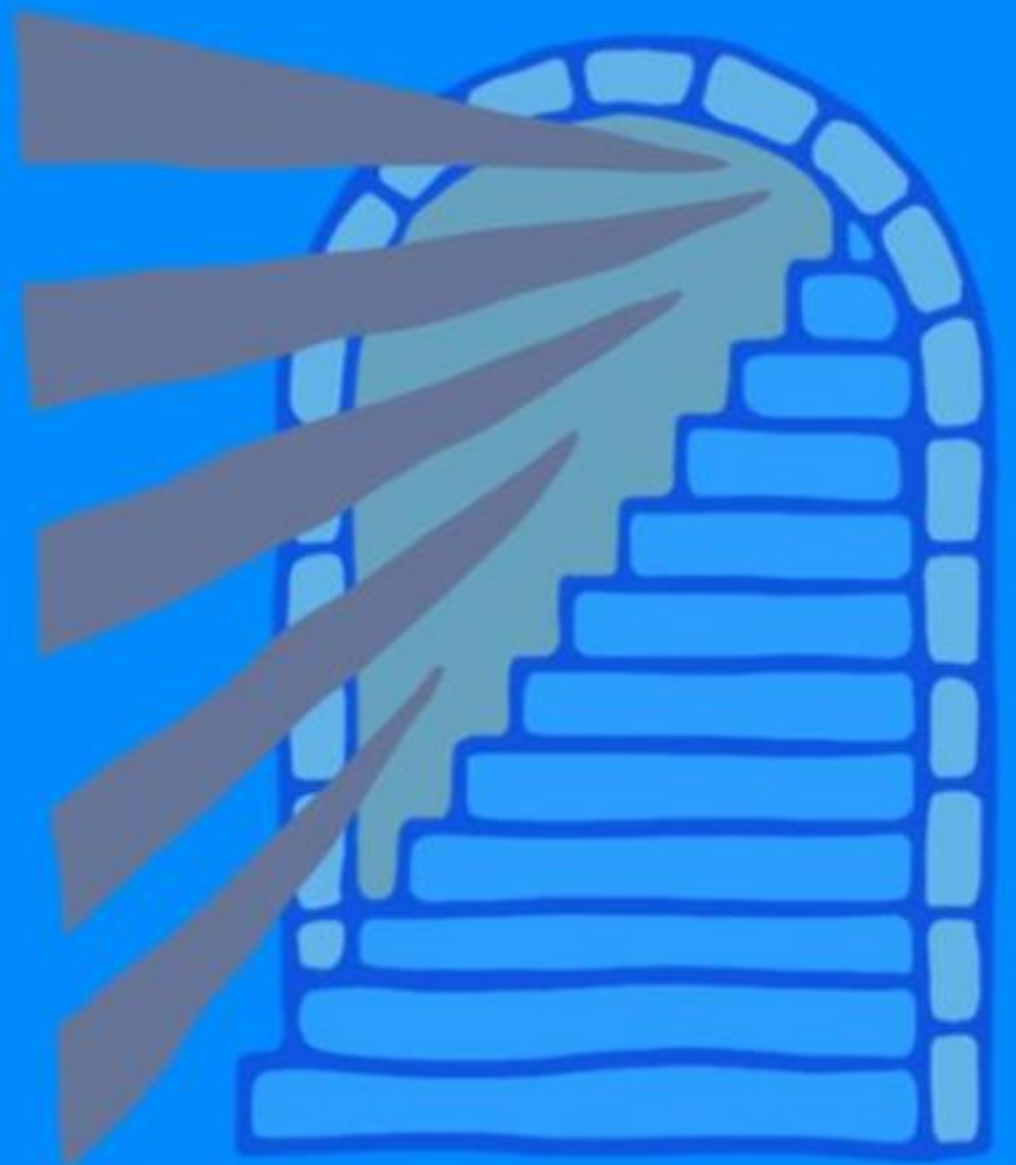
Unity and
Maturity

Heart

- When angry...
1. Do not sin
 2. Do not simmer

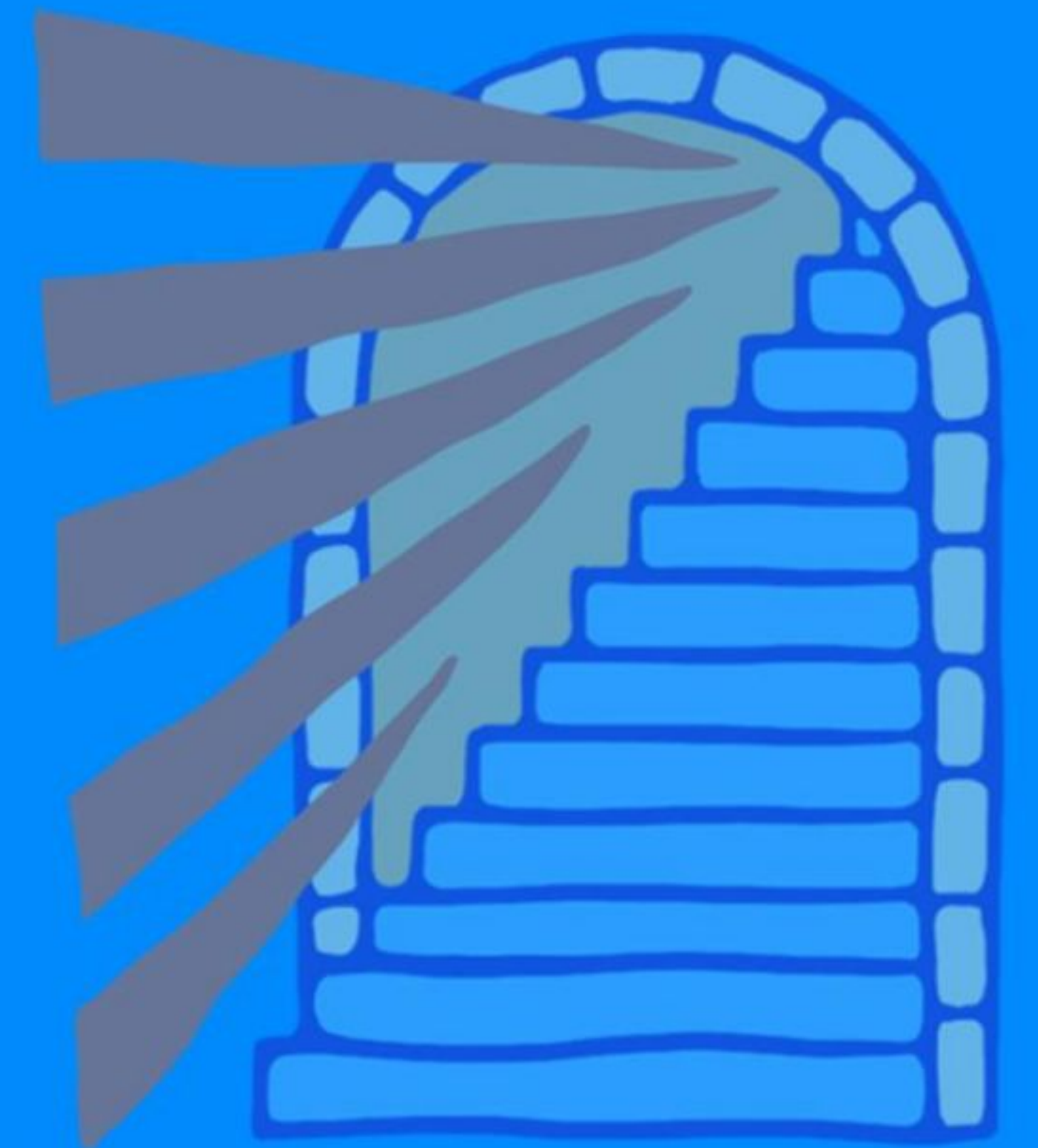
Body

1. No longer steal
2. Work and be generous



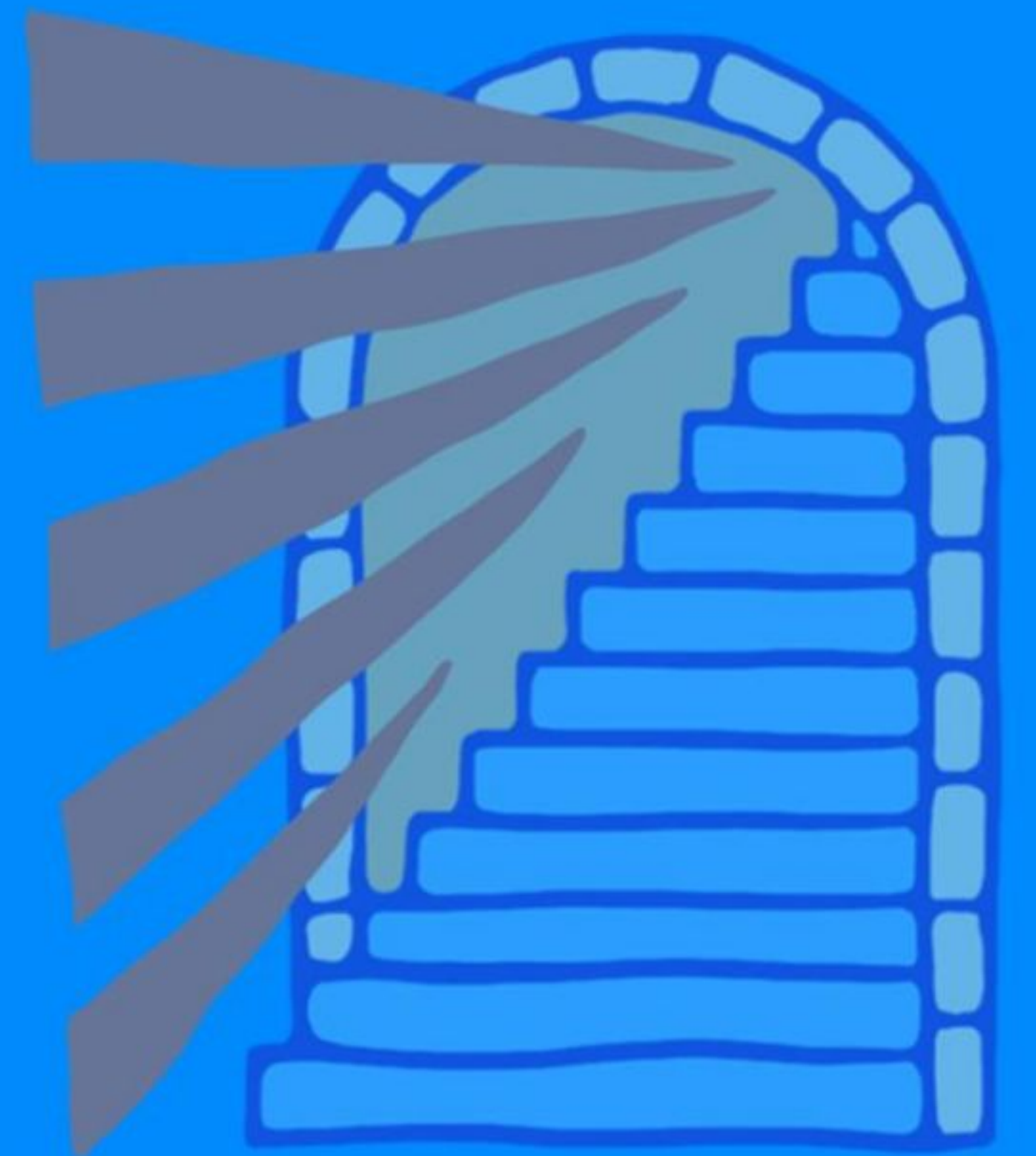
Unity requires graceful truth-telling,
emotional temperance, and individual industry.

- Your neighbor needs the truth out of you.
- Your relationships require emotional temperance.
- You need to work and give.



Unity requires graceful truth-telling,
emotional temperance, and individual industry.

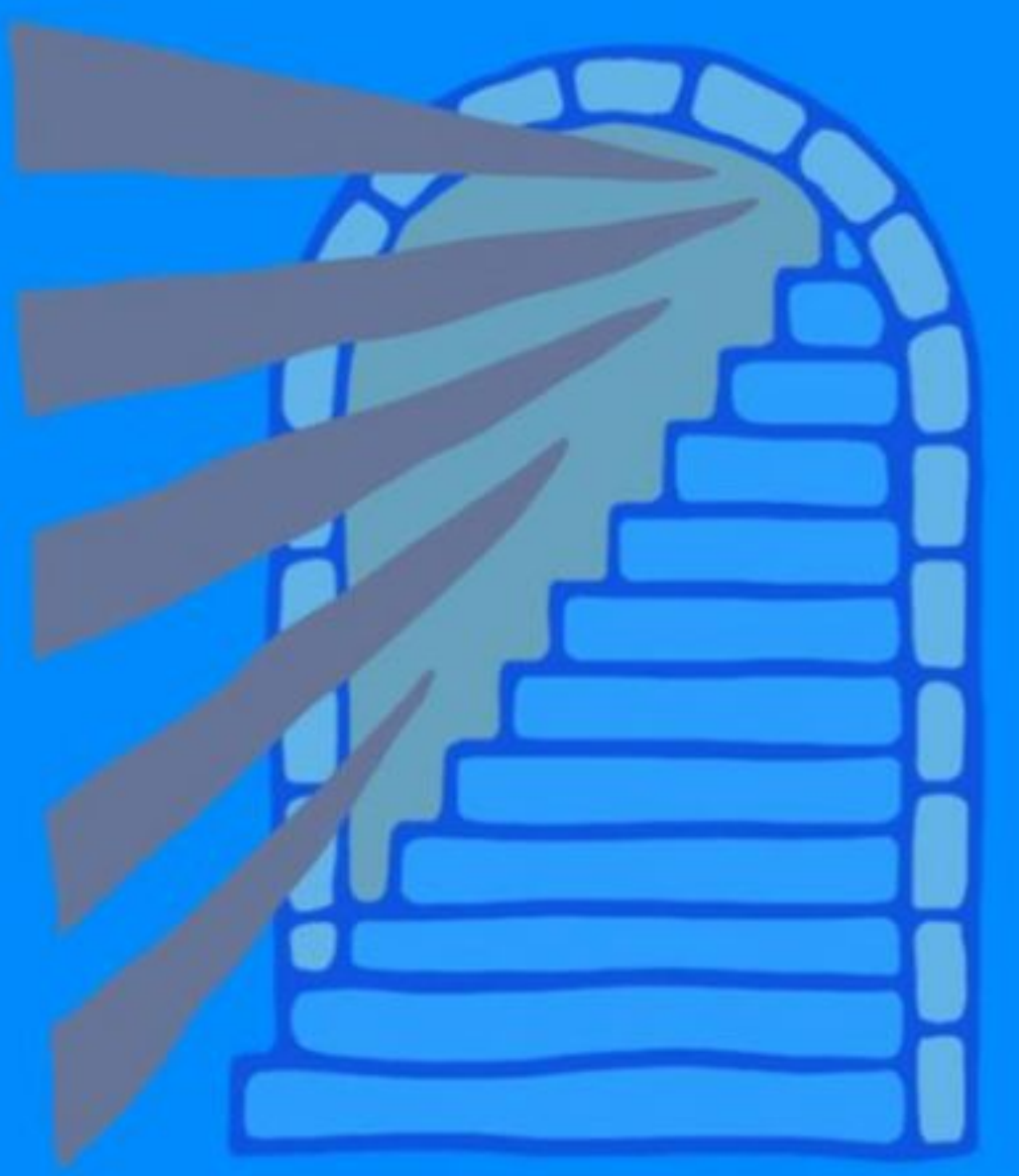
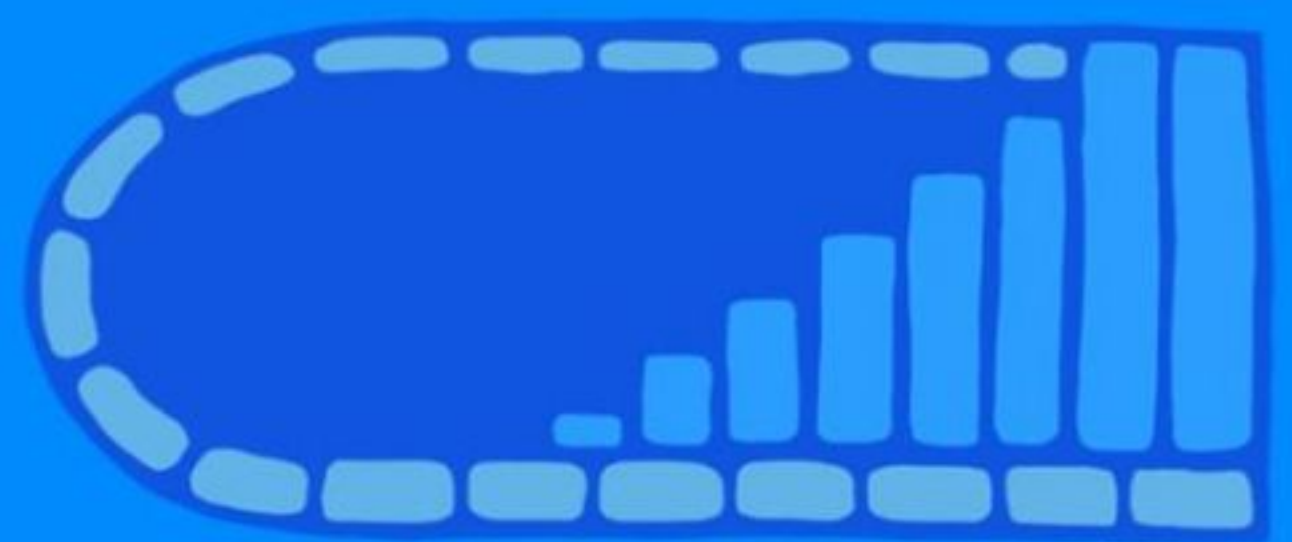
- Your neighbor needs the truth
out of you.



Your neighbor needs the truth out of you.

Ephesians 4:25

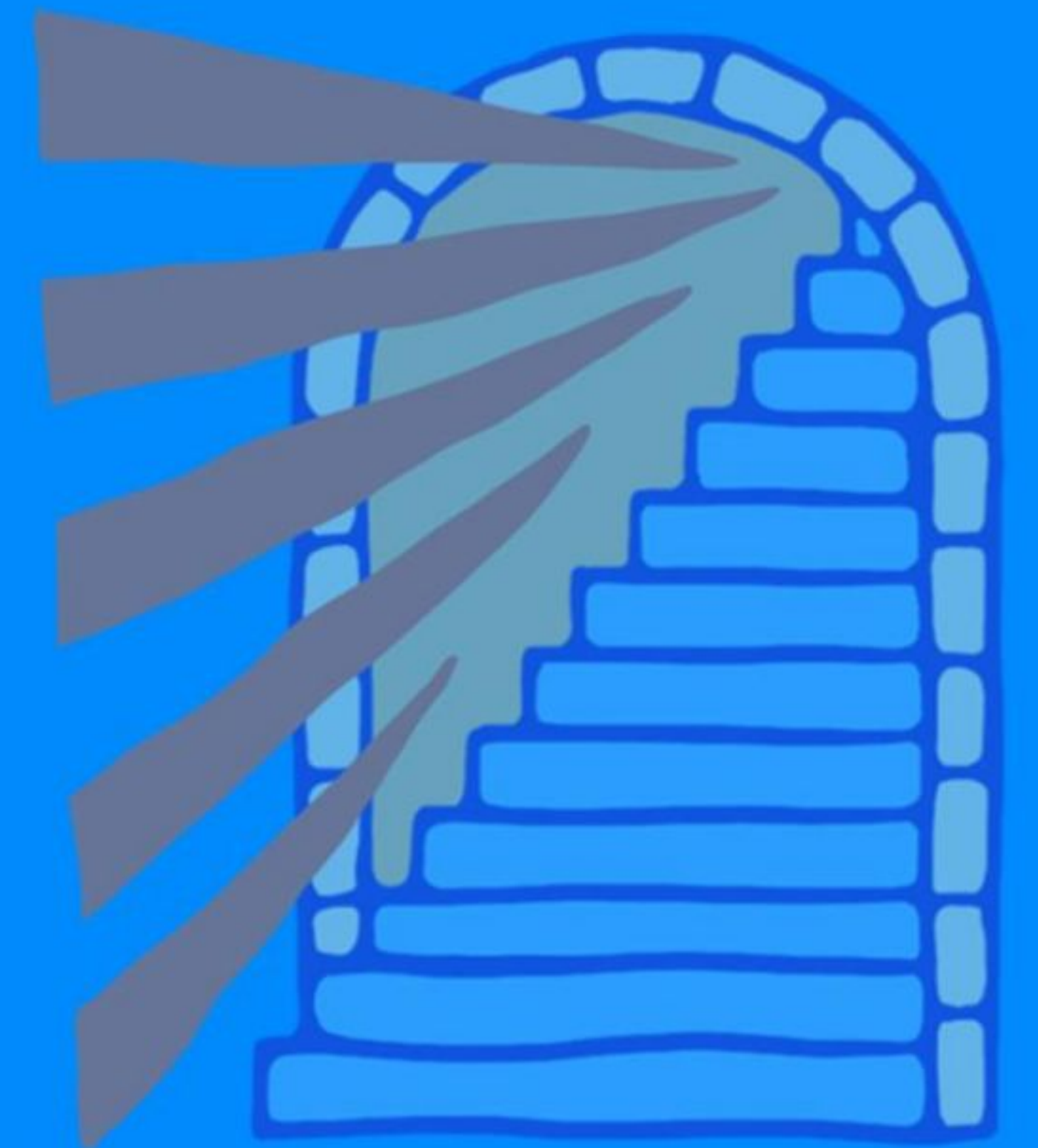
Therefore each of you must put off falsehood and speak truthfully to your neighbor, for we are all members of one body.



Your neighbor needs the truth out of you.

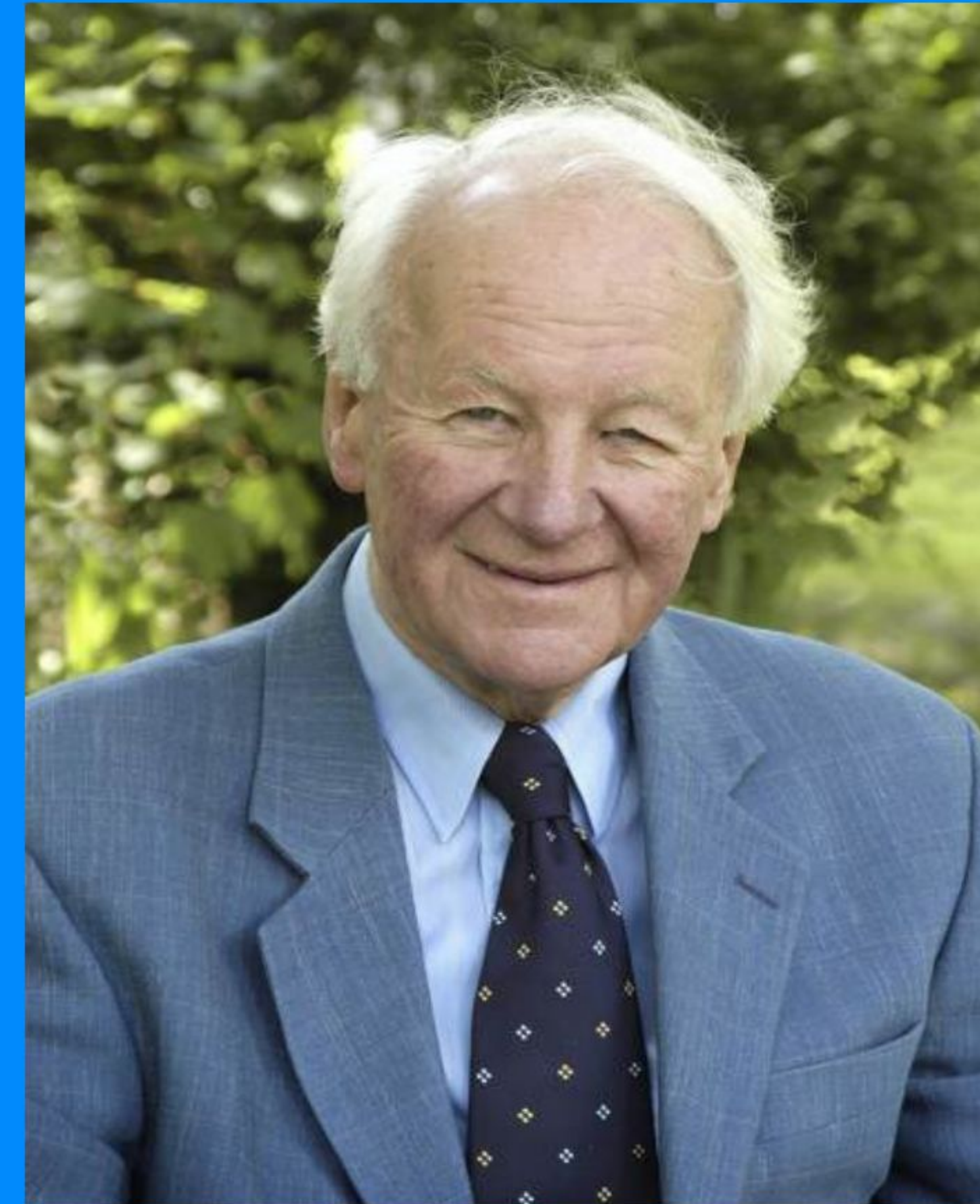


Faithful truth-telling
builds character
(in you and others)

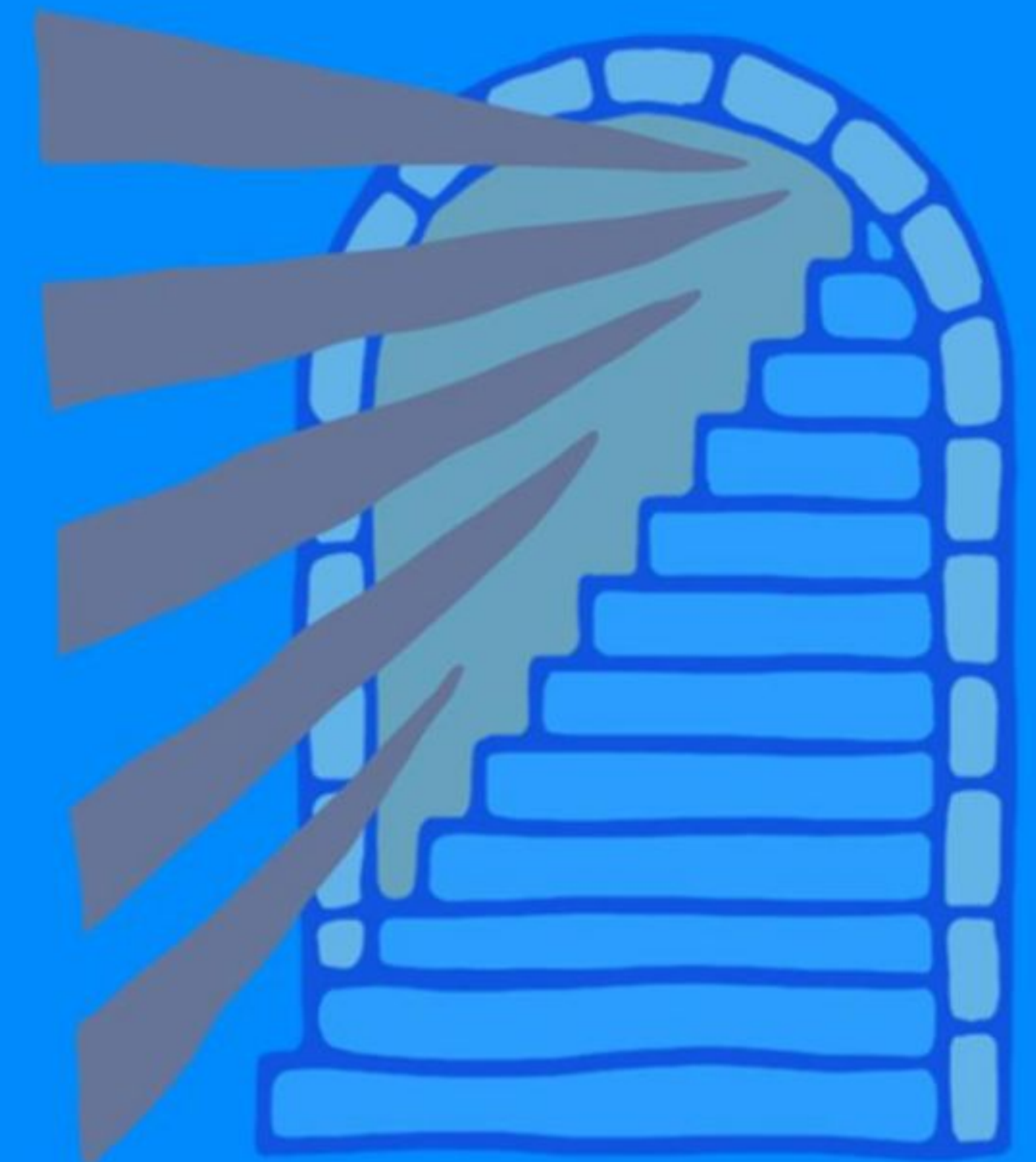


Your neighbor needs the truth out of you.

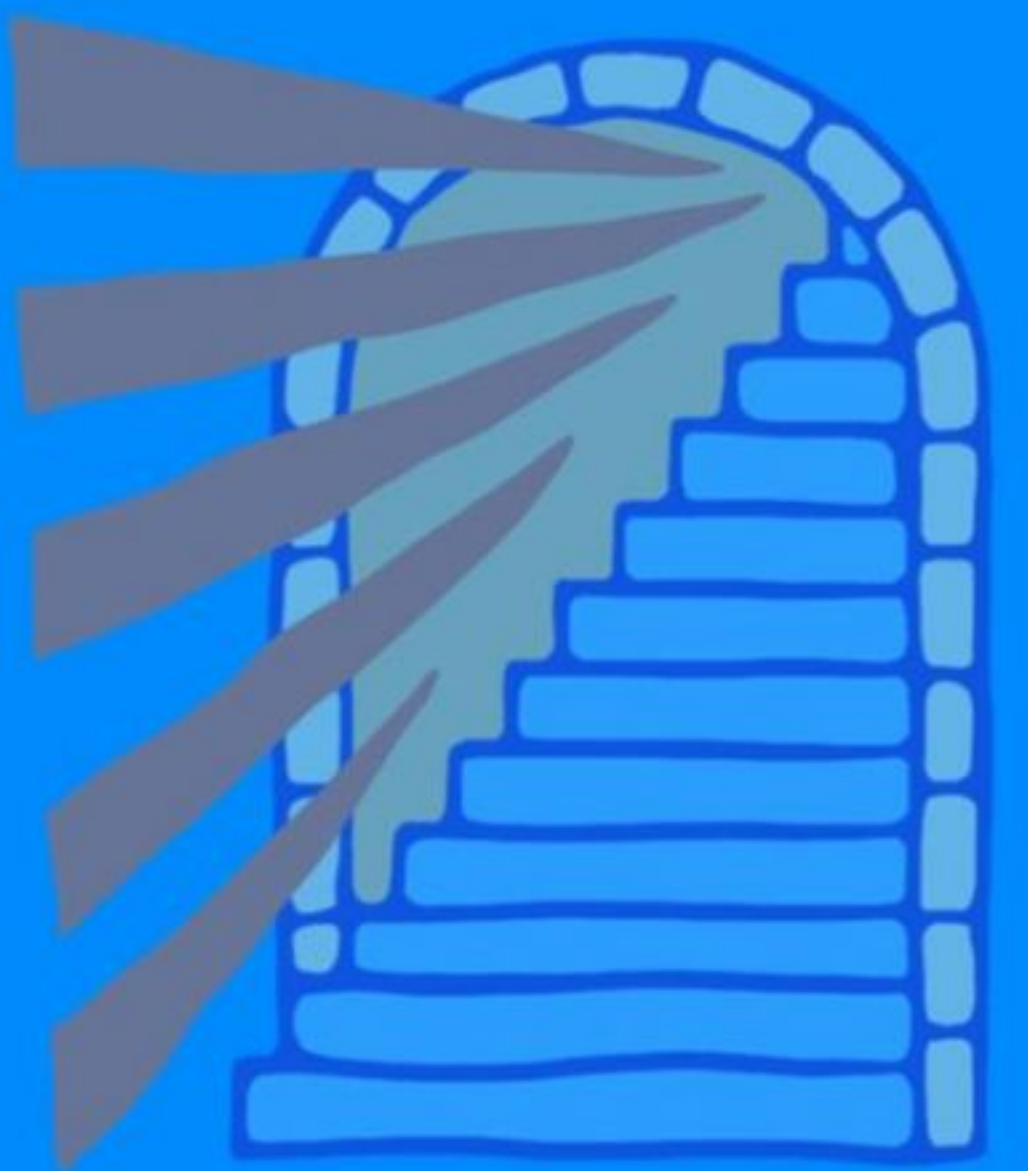
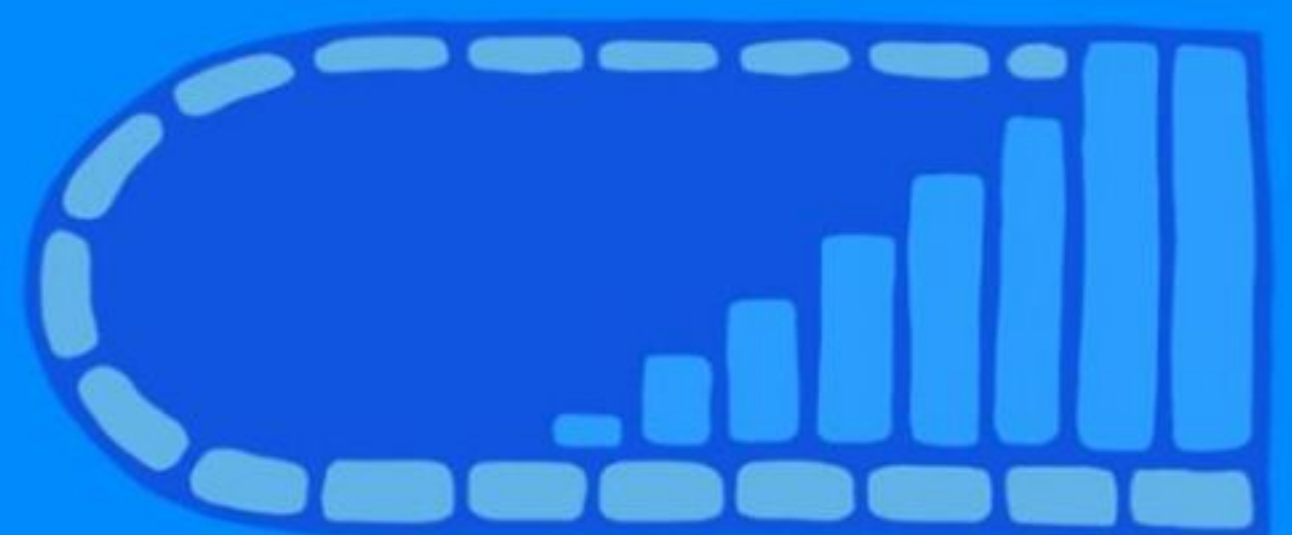
Faithful
truth-telling
builds trust



*"Fellowship is built
on trust and trust
depends on truth."*
– John Stott

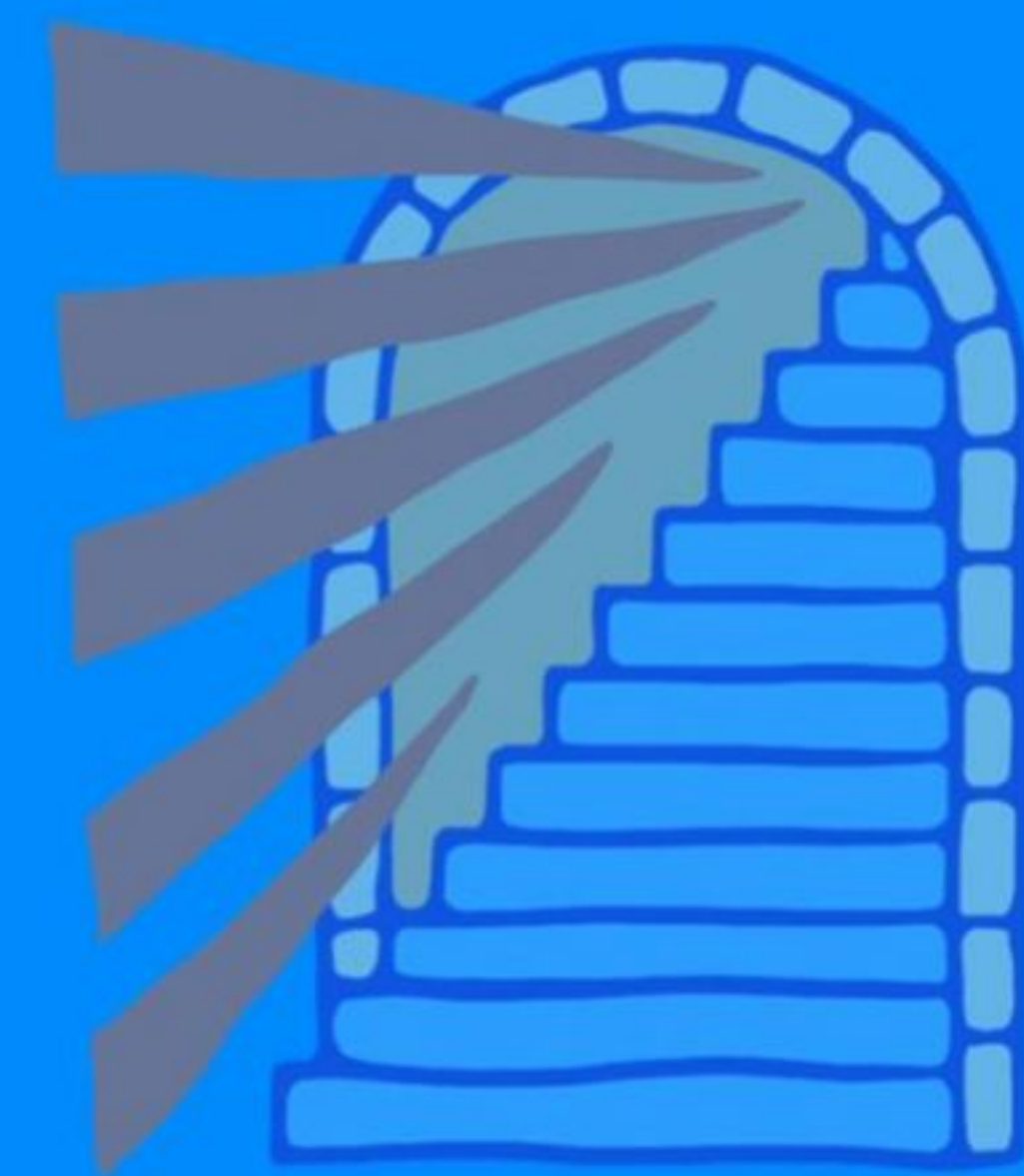
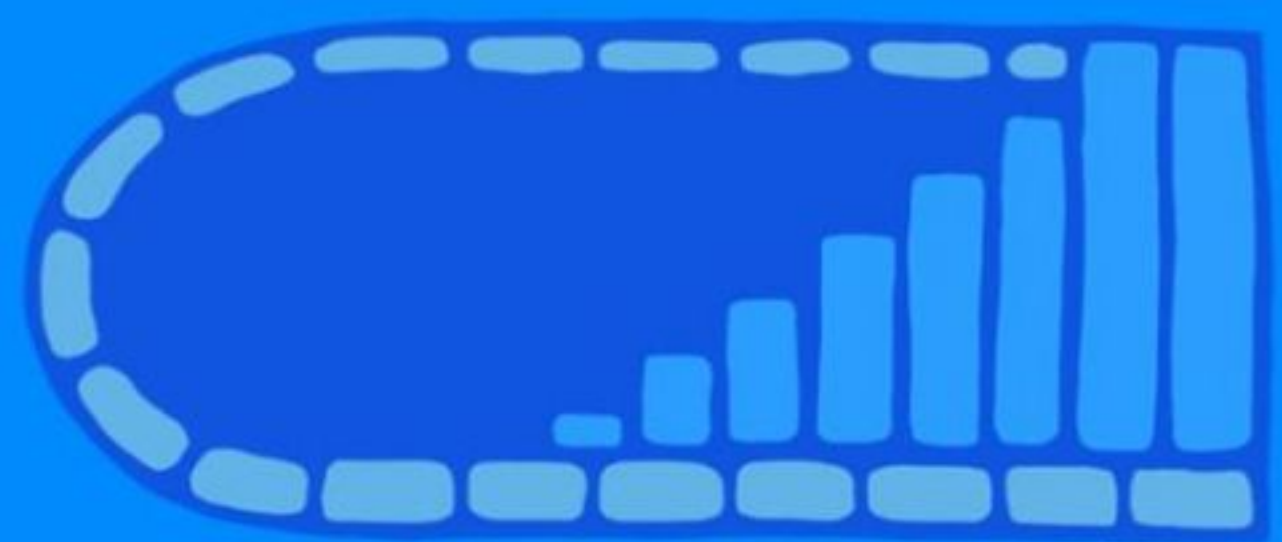


Faithful truth-telling builds trust



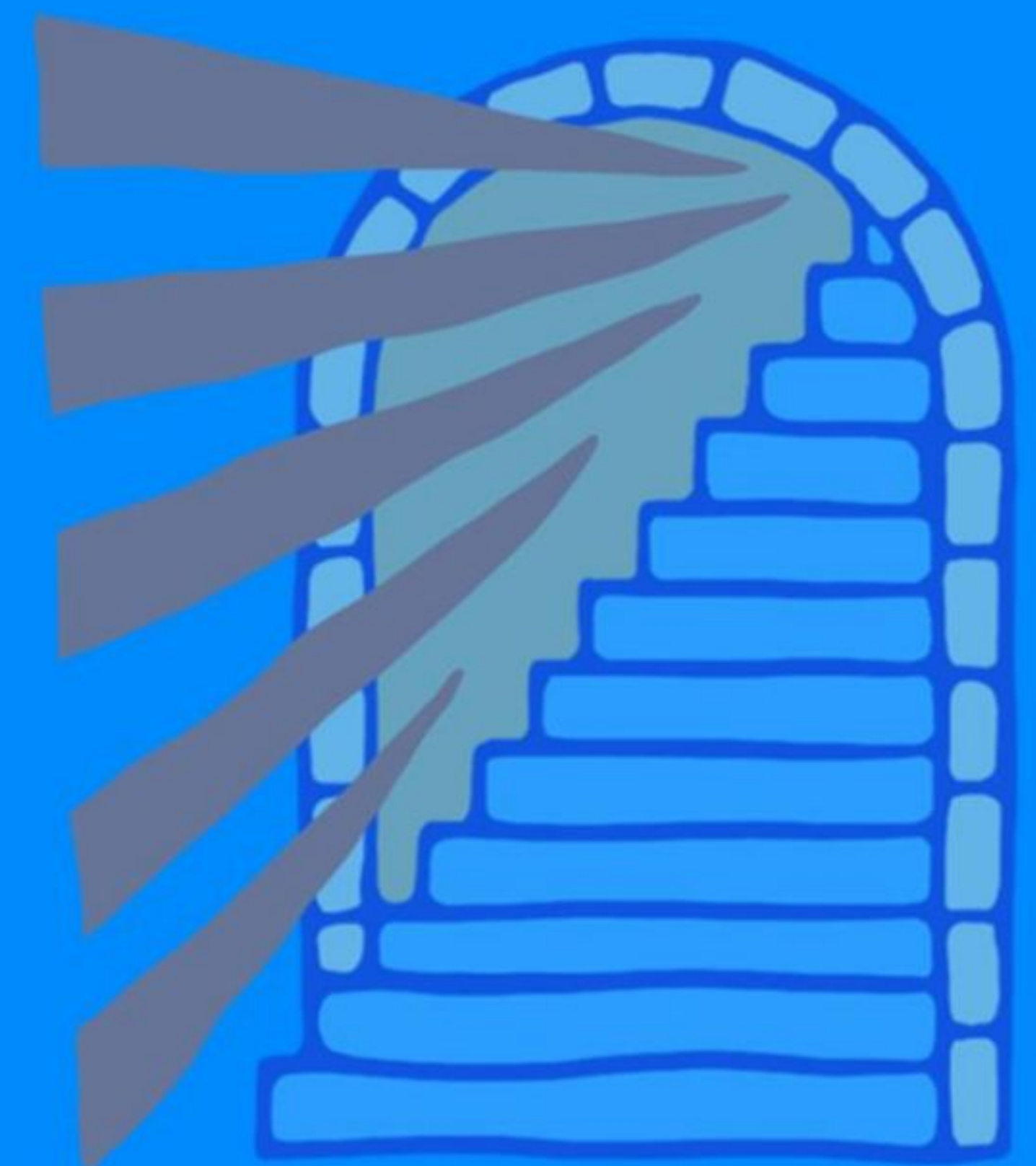
*Think of a friend that needs to hear
the truth from you.*

What would you say to them?



Unity requires graceful truth-telling,
emotional temperance, and individual industry.

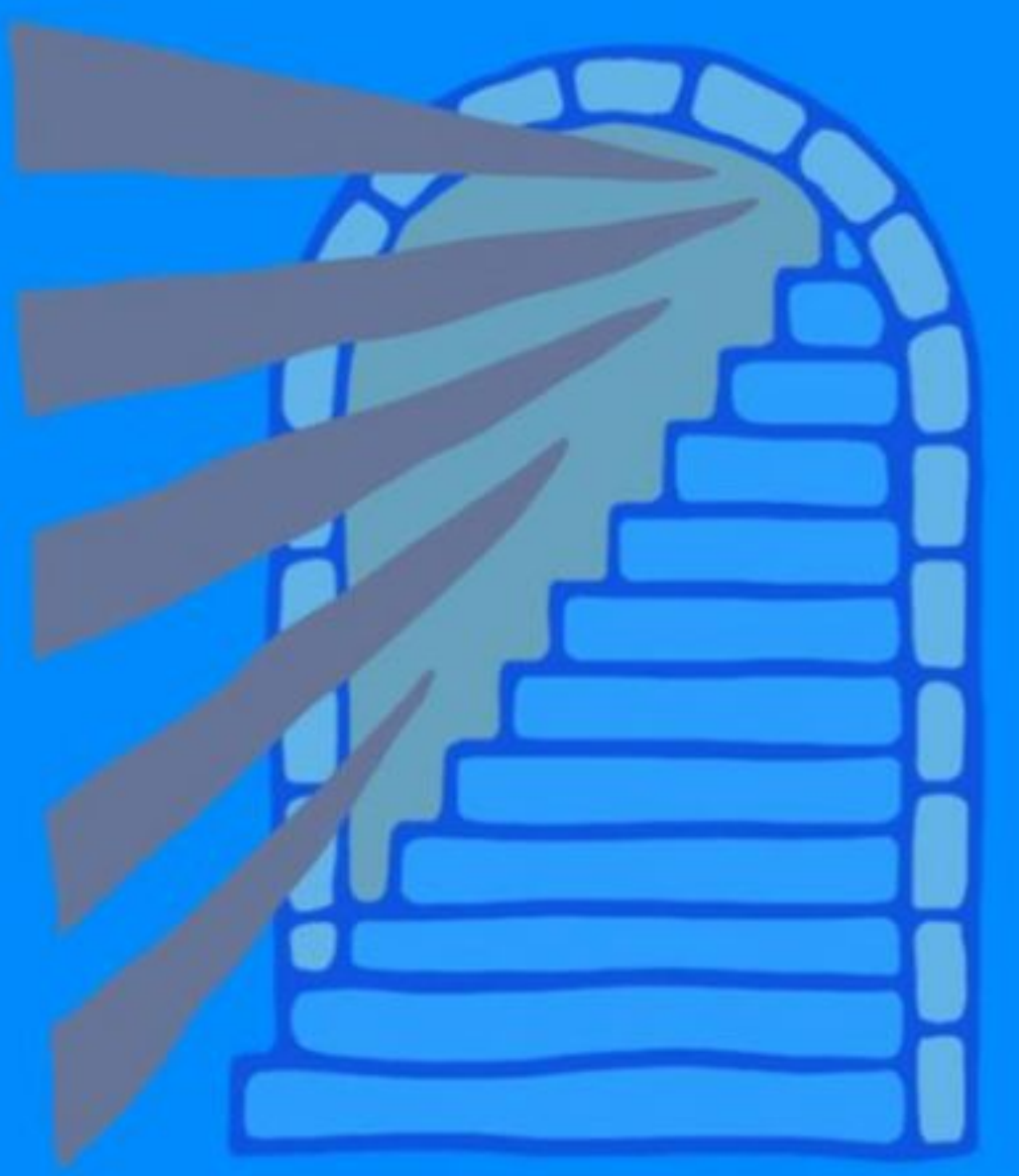
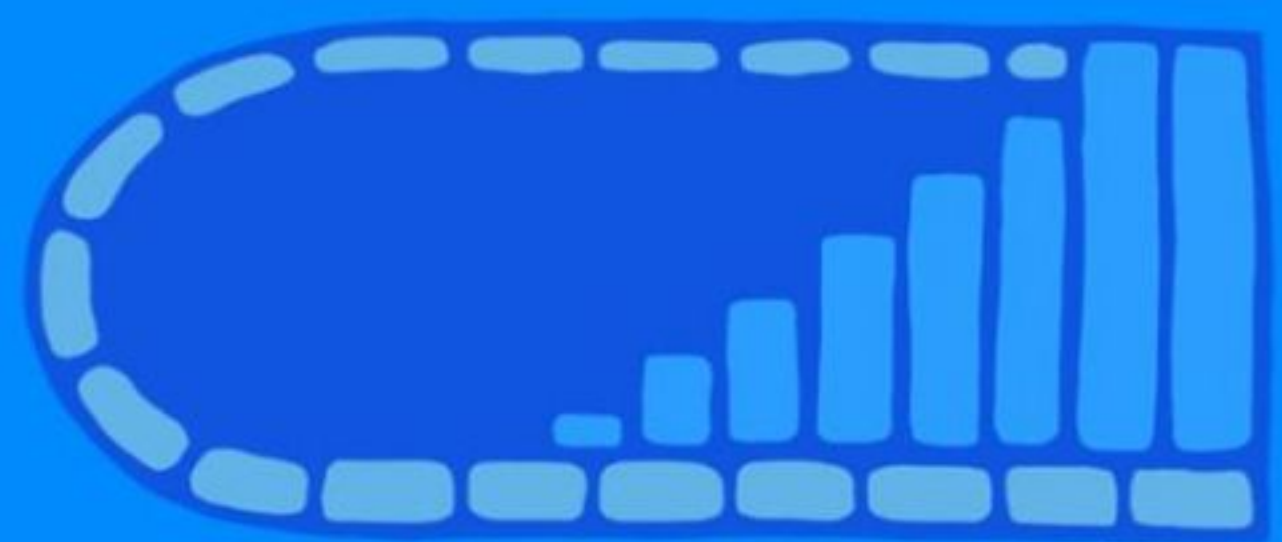
- Your neighbor needs the truth
out of you.
- Your relationships require
emotional temperance.



Your relationships require emotional temperance.

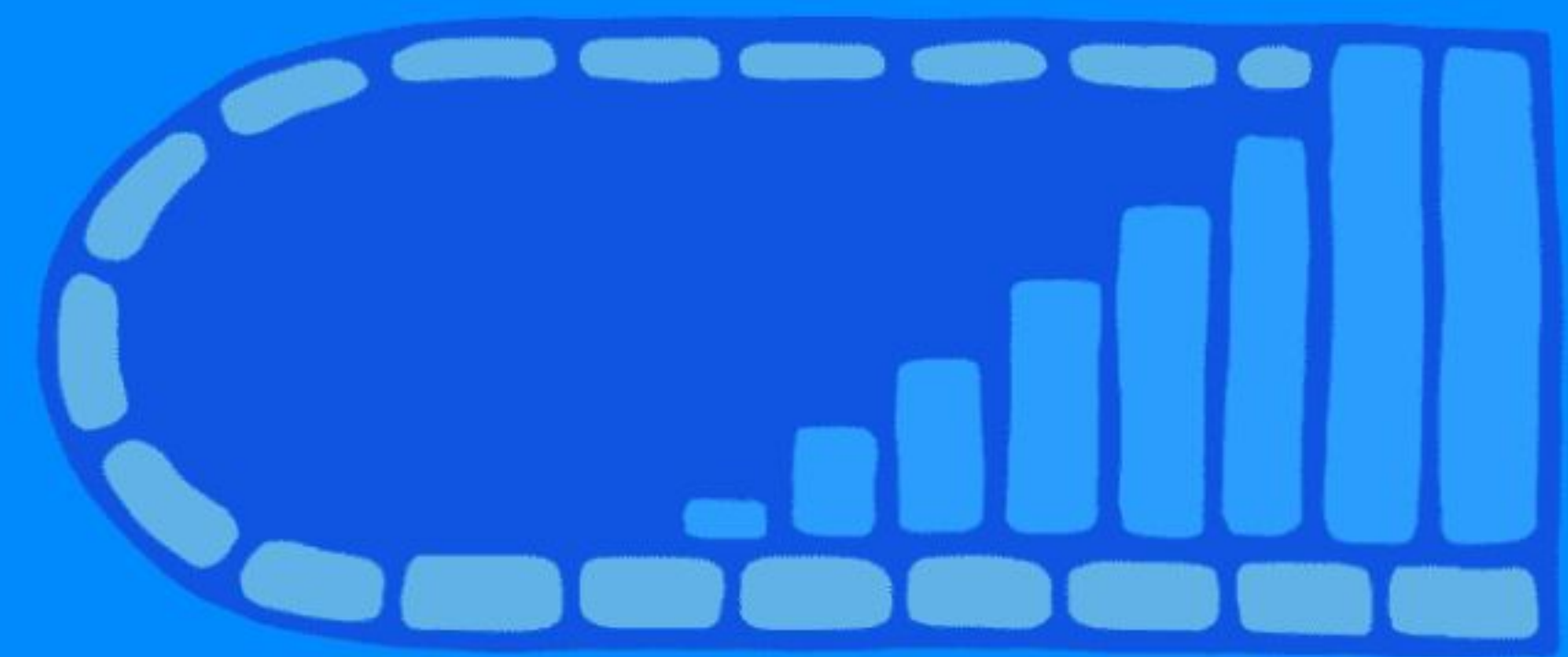
Ephesians 4:26 – 27

In your anger do not sin. Do not let the sun go down while you are still angry, and do not give the devil a foothold.



Your relationships require emotional temperance.

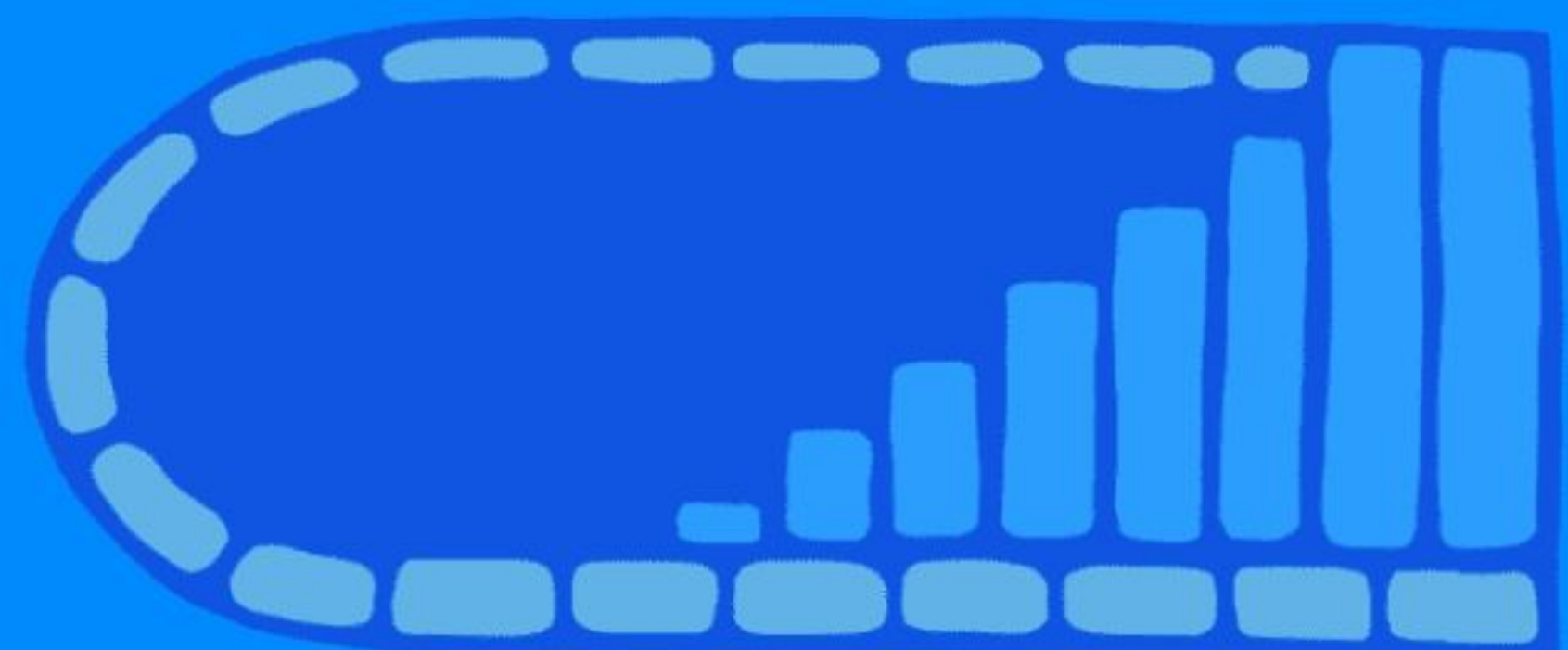
There is a Time to Get Angry.



Your relationships require emotional temperance.



When you are angry, your impulsive and reactionary thinking tends to dominate.



Your relationships require emotional temperance.

I'm Angry! Now what?

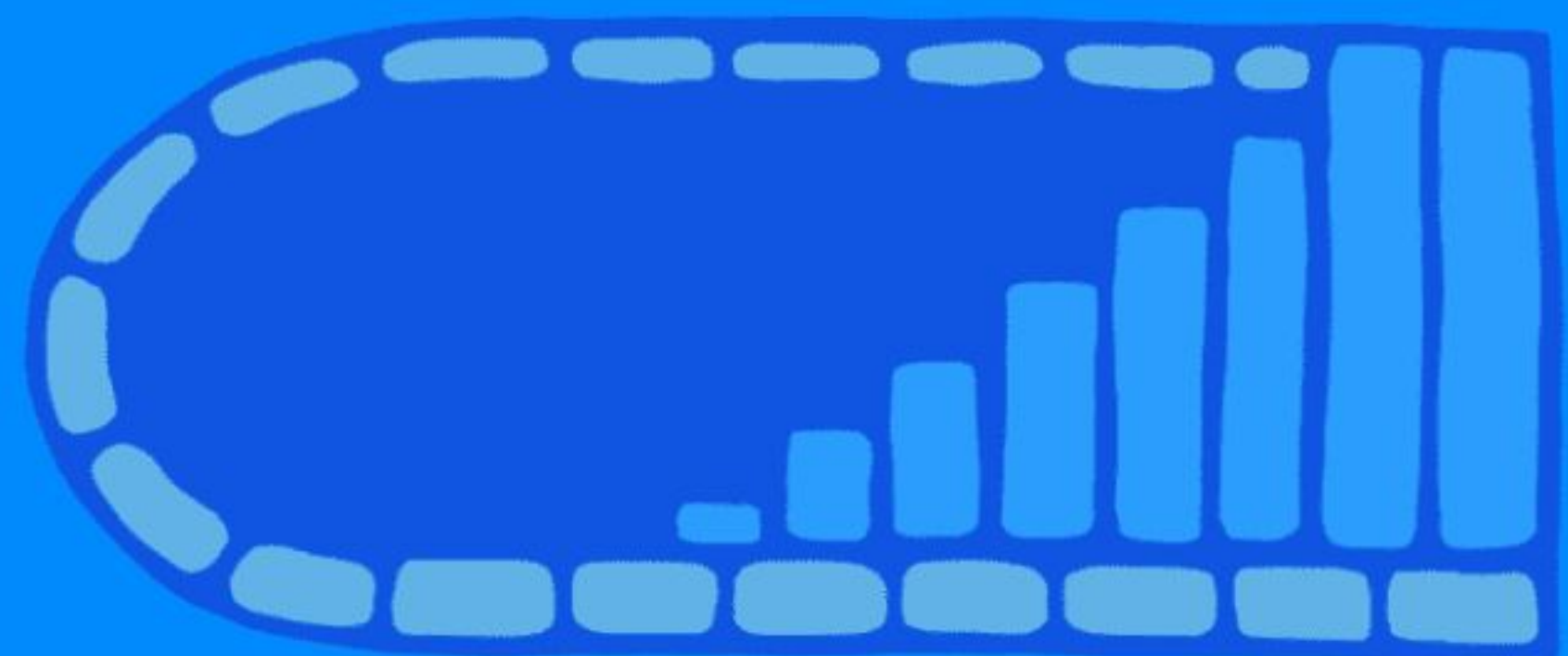
- What is really going on here?
- What am I really angry about?
- How might I have contributed to this problem?
- What does God's word say about this issue?
- How can I be most helpful to the person I am angry with?



Your relationships require
emotional temperance.

The time to stay angry is short.

*"Do not let the sun go down
while you are still angry..."
Ephesians 4:27*

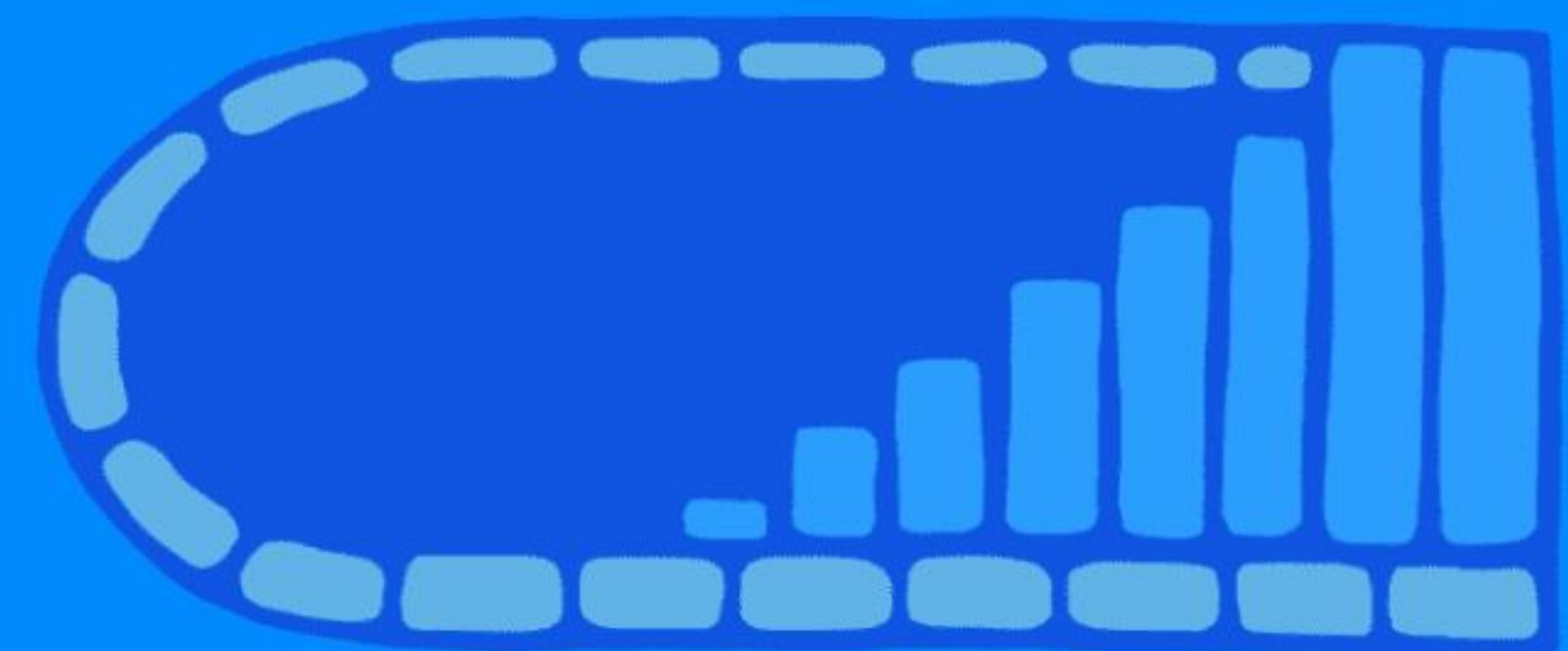


Your relationships require emotional temperance.

The time to stay angry is short.

The enemy:

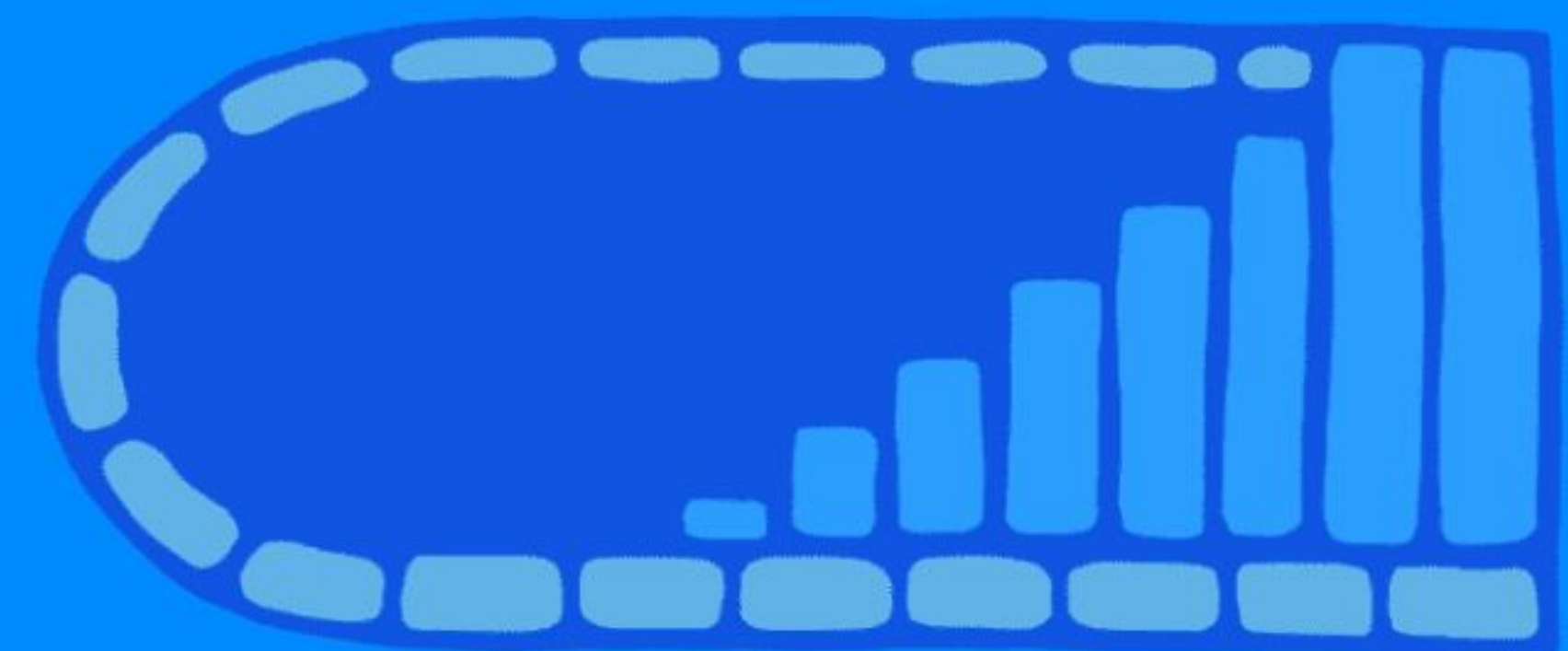
- wants to make a problem a crisis
- wants to make a spat a break up



Your relationships require emotional temperance.

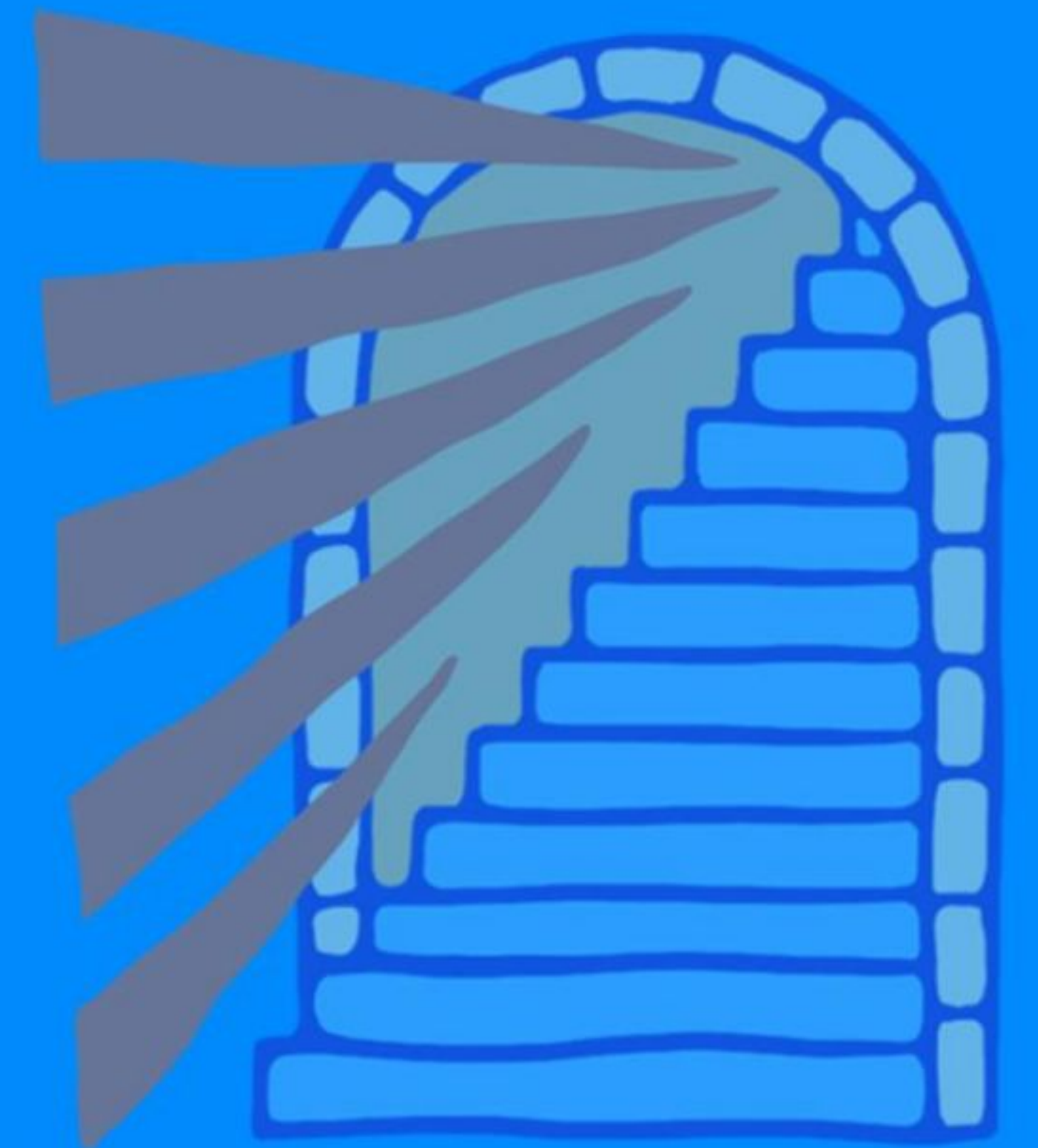
The time to stay angry is short so...

- acknowledge there is a problem
- agree to address it soon
- don't ignore it!



Unity requires graceful truth-telling,
emotional temperance, and individual industry.

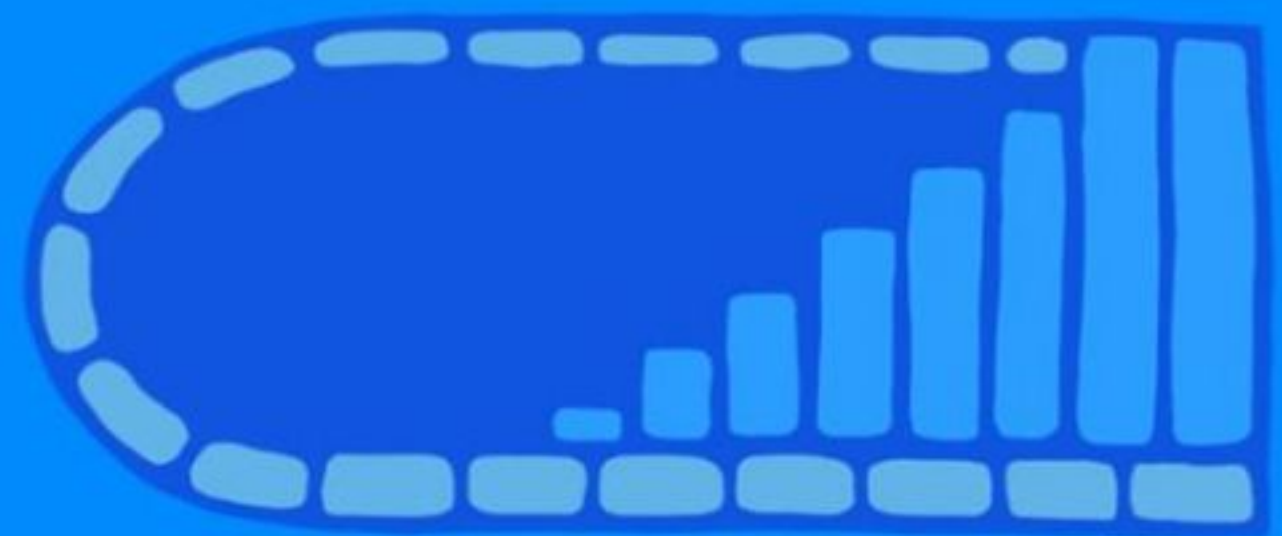
- Your neighbor needs the truth out of you.
- Your relationships require emotional temperance.
- You need to work and give.



You need to work and give.

Ephesians 4:28

Anyone who has been stealing must steal no longer, but must work, doing something useful with their own hands, that they may have something to share with those in need.

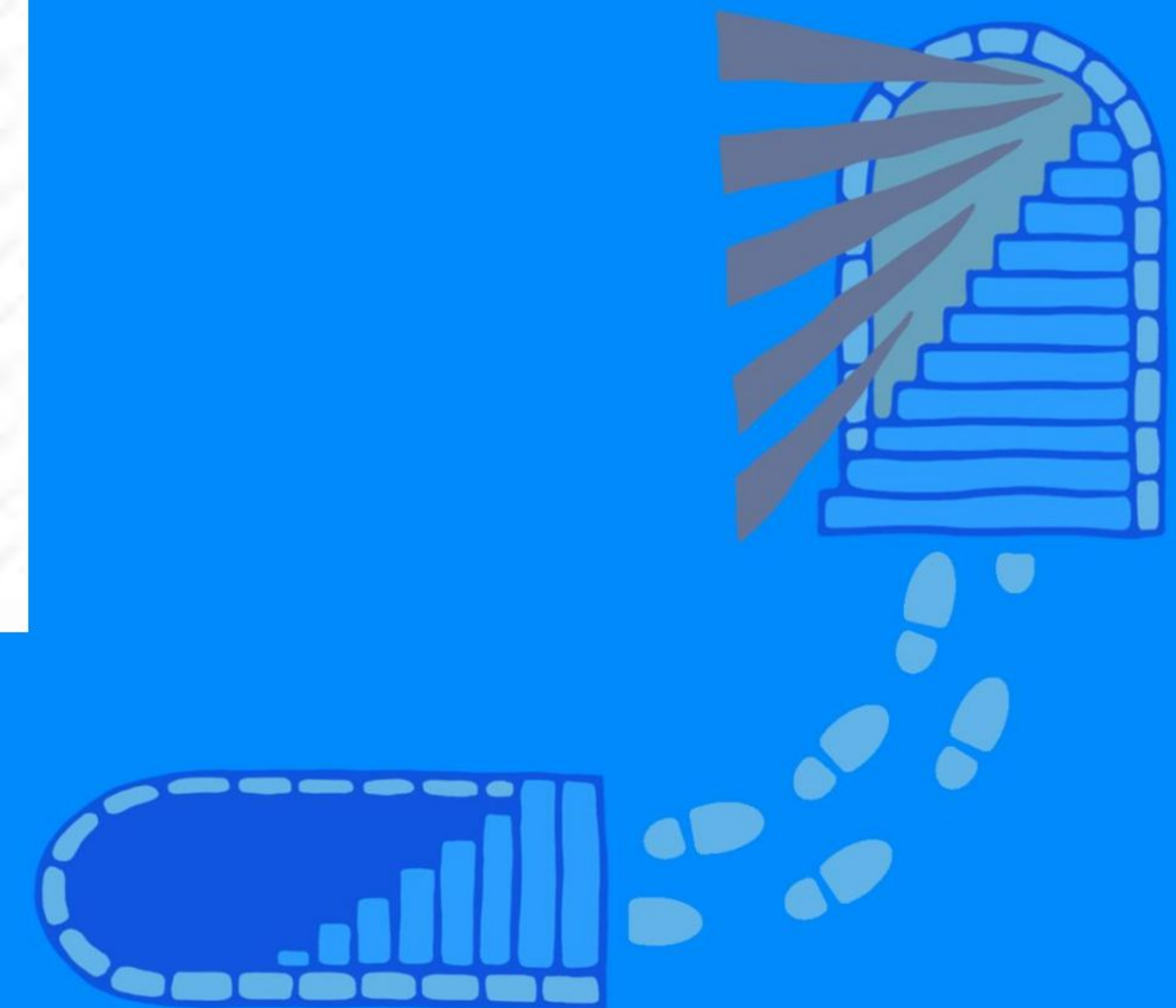


You need to work and give.

Spiritual maturity and church unity
requires each of us to work and give.

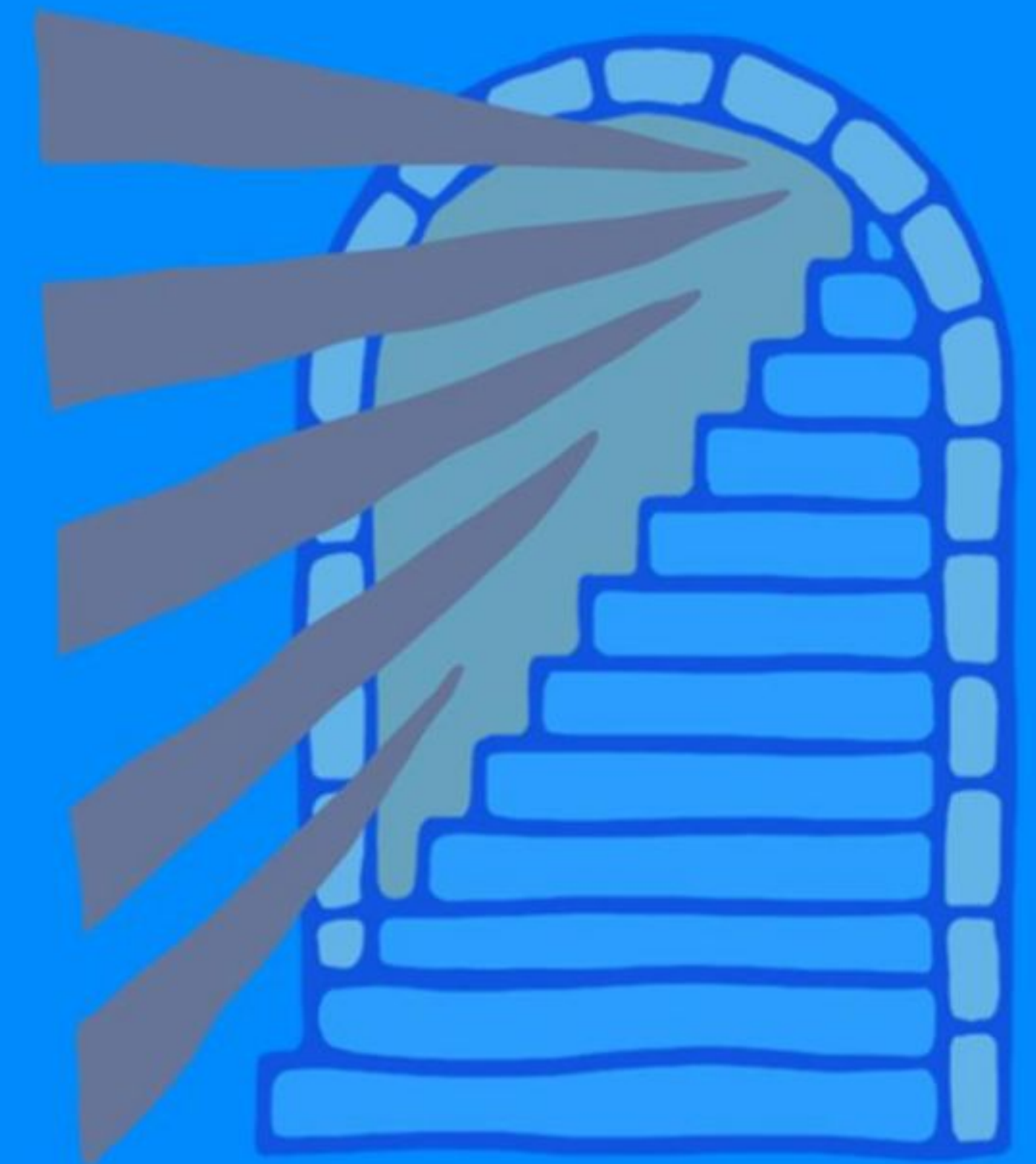


+



Unity requires graceful truth-telling,
emotional temperance, and individual industry.

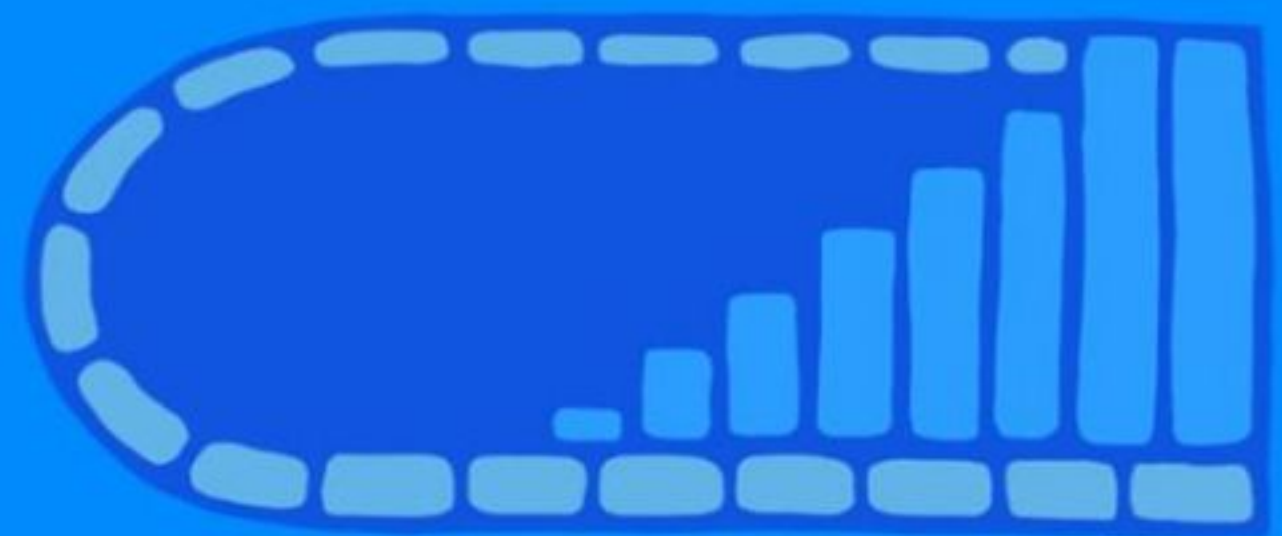
- Your neighbor needs the truth out of you.
- Your relationships require emotional temperance.
- You need to work and give.



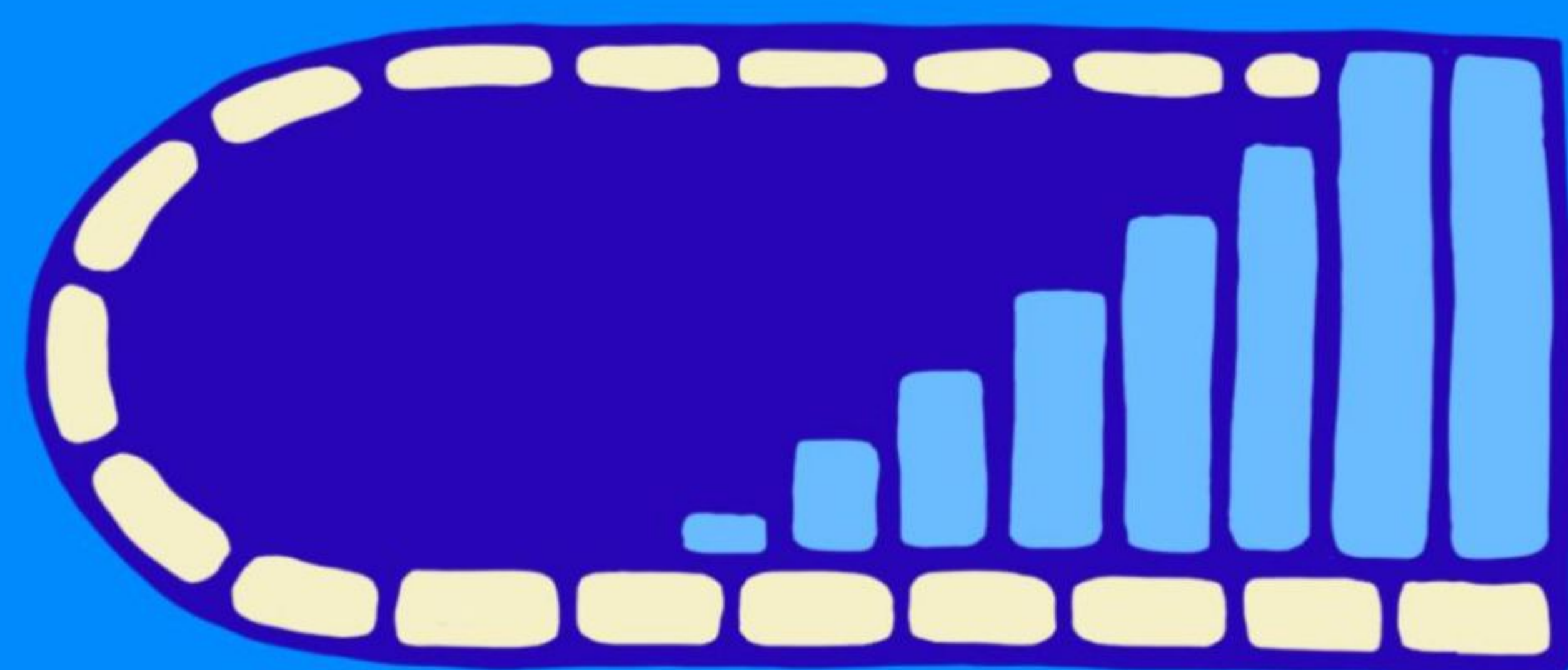
Managing Your Anger



Sister Rosemary
Nyirumbe



BE MADE



NEW