

SCRIPTURE

1 JOHN 4:9 – 21

PHILIPPIANS 1:25 – 30



PHILIPPIANS: CONTENDING

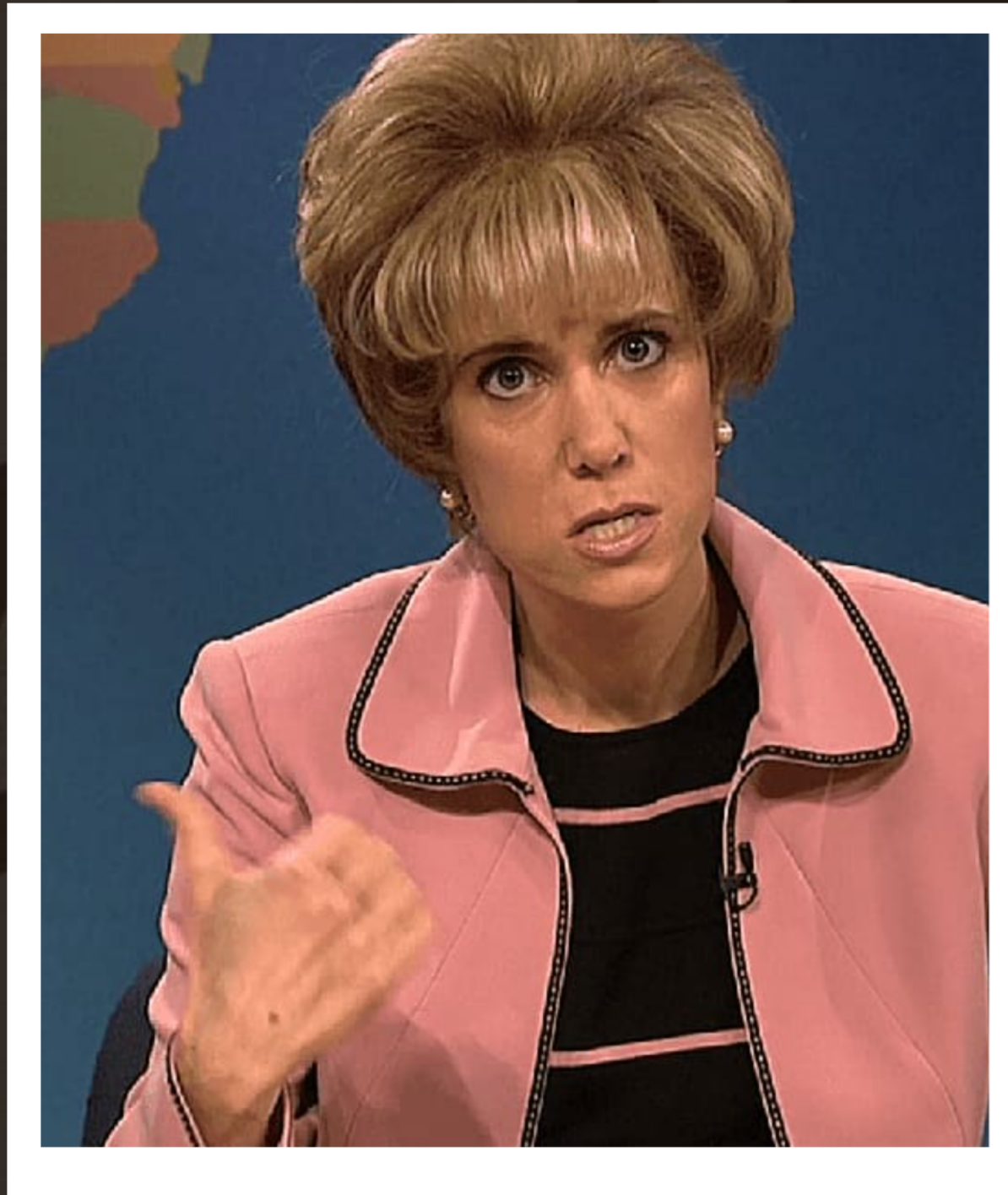
**We're
gonna
jump
right in.**



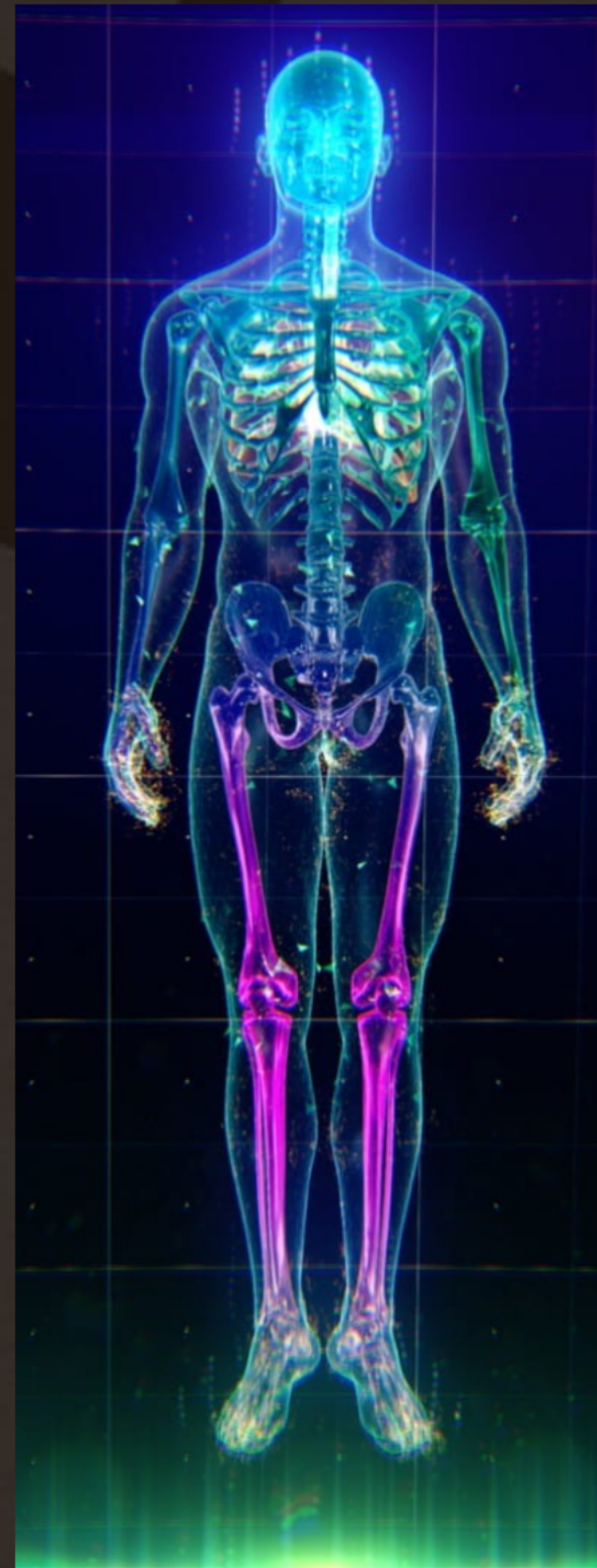
Every Christian must decide:

Are you going to **build** the
Church or **abandon** her?

But...
Shouldn't
we abandon
the church?



What does Jesus think?



Eph. 2-4
1 Cor. 12

Eph. 5
Rev. 21-22

1 Peter 2:5

Romans 8:23,
9:4; Eph 1:5,
etc.

Phil. 1:27 – 8
Eph. 6

What gives the greatest comfort
to a spiritual father and warning
to our opposition?

Standing firm in one spirit
Contending as one man
For the faith of the Gospel
Unafraid



3 Critical and Practical Conclusions

About us and the church



**1. The church is
accessible only as
the local church.**

1 John 4

1 John 4 20 – 21

If anyone says, "I love God," yet hates his brother, he is a liar. For **anyone who does not love his brother, whom he has seen, cannot love God, whom he has not seen.** And he has given us this command: Whoever loves God must also love his brother.

2. Local churches express the shared faith differently

Our partnerships and your transitions

3. Each church has its own stewardship

We have to make piles of decisions ourselves about how to pursue God's commission to us

Philippians 1:27 – 28

Whatever happens, conduct yourselves in a manner worthy of the gospel of Christ. Then... I will know that you stand firm in one spirit, contending as one man for the faith of the gospel without being frightened.

PHILIPPIANS:





CONTENDING



Who is HPC?



While we are together in this body,
in this situation,
what are we doing and how?





Is this boring?

Unity on this scale requires a shared knowledge of structure.





(Institutions are how humans accomplish things. We address bad institutions with good ones.)




A Summary

We'll be working this out more over the next 8 weeks preaching through Philippians 4, with 2 dedicated sermons at the end.





3 Levels of Structure:

1. Core mission and values
 2. Strategic pursuits
 3. Expansion: POSB
- 

Level 1: The Core

Make Substantive Disciples

Connect, Grow, Serve

Valuing: the Gospel, Bible, Community,
Sacrifice, and Context.



Level 2: Strategic pursuits

Consistent leadership must be given to what portends long term health.

Level 3: Expansion: POSB

Surplus isn't for gluttony.
It's seed and salve.

PHILIPPIANS:



CONTENDING